

# DNA ligase III/LIG3 Recombinant Matched Antibody Pair, PBS Only

Catalog Number: **MP01953-3**

## Capture Antibody Information

**Catalog Number:**

85409-5-PBS

**Host:**

Rabbit

**Isotype:**

IgG

**Purification Method:**

Protein A purification

**Clone ID:**

242870A8

**Reactivity:**

human

**Immunogen Catalog Number:**

Ag24917

**Conjugate:**

Unconjugated

**Full name:**

ligase III, DNA, ATP-dependent

**Gene ID:**

3980

## Detection Antibody Information

**Catalog Number:**

85409-1-PBS

**Host:**

Rabbit

**Isotype:**

IgG

**Purification Method:**

Protein A purification

**Clone ID:**

242870E11

**Reactivity:**

human

**GenBank:**

BC068005

**Immunogen Catalog Number:**

Ag24917

**Conjugate:**

Unconjugated

**Full name:**

ligase III, DNA, ATP-dependent

**Gene ID:**

3980

## Applications

**Tested Applications:**

Sandwich ELISA

**Range:**

0.47-30 ng/mL (Sandwich ELISA)

**Recommended Dilutions:**

It is recommended that this reagent should be titrated in each testing system to obtain optimal results.

## Product Information

MP01953-3 targets DNA ligase III/LIG3 in immunoassays as a matched antibody pair. Validated in Sandwich ELISA.

Capture antibody: LIG3 Recombinant antibody, PBS Only (Capture) 85409-5-PBS (242870A8). 100 µg. Concentration 1 mg/mL.

Detection antibody: DNA ligase III/LIG3 Recombinant antibody, PBS Only (Detector) 85409-1-PBS (242870E11). 100 µg. Concentration 1 mg/mL.

Unconjugated rabbit recombinant monoclonal antibody pair in PBS only storage buffer at a concentration of 1 mg/mL, ready for conjugation. Created using Proteintech's proprietary in-house recombinant technology. Recombinant production enables unrivalled batch-to-batch consistency, easy scale-up, and future security of supply.

Matched antibody pairs are designed for use in a variety of assays and platforms that require matched antibody pairs.

Antibody use should be optimized for each application and assay.

## Storage

**Storage:**

Store at -80°C.

**Storage buffer:**

PBS only

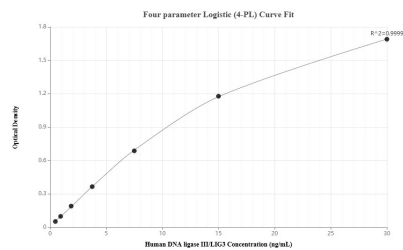
For technical support and original validation data for this product please contact:

T: 1 (888) 4PTGLAB (1-888-478-4522) (toll free in USA), or 1(312) 455-8498 (outside USA)

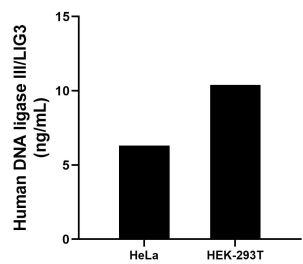
E: [proteintech@ptglab.com](mailto:proteintech@ptglab.com)  
W: [ptglab.com](http://ptglab.com)

This product is exclusively available under Proteintech Group brand and is not available to purchase from any other manufacturer.

## Selected Validation Data



Sandwich ELISA standard curve of MP01953-3, Human DNA ligase III/LIG3 Recombinant Matched Antibody Pair - PBS only. 85409-5-PBS was coated to a plate as the capture antibody and incubated with serial dilutions of standard Ag24917. 85409-1-PBS was HRP conjugated as the detection antibody. Range: 0.47-30 ng/mL



The mean DNA ligase III/LIG3 concentration was determined to be 6.31 ng/mL in HeLa cell extract based on a 2.1 mg/mL extract load and 10.39 ng/mL in HEK-293T cell extract based on a 2.8 mg/mL extract load.