

PARN Recombinant Matched Antibody Pair, PBS Only

Catalog Number: **MP01955-3**

Capture Antibody Information

Catalog Number:
85408-6-PBS
Host:
Rabbit
Isotype:
IgG
Purification Method:
Protein A purification

Clone ID:
242993A3
Reactivity:
human
Immunogen Catalog Number:
Ag4774

Conjugate:
Unconjugated
Full name:
poly(A)-specific ribonuclease
(deadenylation nuclease)
Gene ID:
5073

Detection Antibody Information

Catalog Number:
85408-4-PBS
Host:
Rabbit
Isotype:
IgG
Purification Method:
Protein A purification

Clone ID:
242993H7
Reactivity:
human
GenBank:
BC050029
Immunogen Catalog Number:
Ag4774

Conjugate:
Unconjugated
Full name:
poly(A)-specific ribonuclease
(deadenylation nuclease)
Gene ID:
5073

Applications

Tested Applications:
Sandwich ELISA

Range:
195.3-6250 pg/mL (Sandwich ELISA)

Recommended Dilutions:
It is recommended that this reagent should be titrated in each testing system to obtain optimal results.

Product Information

MP01955-3 targets PARN in immunoassays as a matched antibody pair. Validated in Sandwich ELISA.

Capture antibody: PARN Recombinant antibody, PBS Only (Capture) 85408-6-PBS (242993A3). 100 µg. Concentration 1 mg/mL.

Detection antibody: PARN Recombinant antibody, PBS Only (Detector) 85408-4-PBS (242993H7). 100 µg. Concentration 1 mg/mL.

Unconjugated rabbit recombinant monoclonal antibody pair in PBS only storage buffer at a concentration of 1 mg/mL, ready for conjugation. Created using Proteintech's proprietary in-house recombinant technology. Recombinant production enables unrivalled batch-to-batch consistency, easy scale-up, and future security of supply.

Matched antibody pairs are designed for use in a variety of assays and platforms that require matched antibody pairs.

Antibody use should be optimized for each application and assay.

Storage

Storage:
Store at -80°C.
Storage buffer:
PBS only

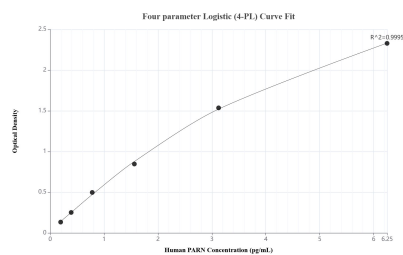
For technical support and original validation data for this product please contact:

T: 1 (888) 4PTGLAB (1-888-478-4522) (toll free in USA), or 1(312) 455-8498 (outside USA)

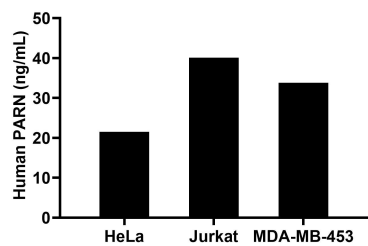
E: proteintech@ptglab.com
W: ptglab.com

This product is exclusively available under Proteintech Group brand and is not available to purchase from any other manufacturer.

Selected Validation Data



Sandwich ELISA standard curve of MP01955-3, Human PARN Recombinant Matched Antibody Pair - PBS only. 85408-6-PBS was coated to a plate as the capture antibody and incubated with serial dilutions of standard Ag4774. 85408-4-PBS was HRP conjugated as the detection antibody. Range: 195.3-6250 pg/mL



The mean PARN concentration was determined to be 21.5 ng/mL in HeLa cell extract based on a 1.8 mg/mL extract load, 40.1 ng/mL in Jurkat cell extract based on a 1.9 mg/mL extract load and 33.8 ng/mL in MDA-MB-453 cell extract based on a 1.5 mg/mL extract load.