

SMAD1 Recombinant Matched Antibody Pair, PBS Only

Catalog Number: **MP01962-1**

Capture Antibody Information

Catalog Number: 85388-3-PBS	Clone ID: 242844C8	Conjugate: Unconjugated
Host: Rabbit	Reactivity: human	Full name: SMAD family member 1
Isotype: IgG	Immunogen Catalog Number: Ag0701	Gene ID: 4086
Purification Method: Protein A purification		

Detection Antibody Information

Catalog Number: 85388-2-PBS	Clone ID: 242844C10	Conjugate: Unconjugated
Host: Rabbit	Reactivity: human	Full name: SMAD family member 1
Isotype: IgG	GenBank: BC001878	Gene ID: 4086
Purification Method: Protein A purification	Immunogen Catalog Number: Ag0701	

Applications

Tested Applications: Sandwich ELISA	Range: 0.391-25 ng/mL (Sandwich ELISA)	Recommended Dilutions: It is recommended that this reagent should be titrated in each testing system to obtain optimal results.
--	---	--

Product Information

MP01962-1 targets SMAD1 in immunoassays as a matched antibody pair. Validated in Sandwich ELISA.

Capture antibody: SMAD1 Recombinant antibody, PBS Only (Capture) 85388-3-PBS (242844C8). 100 µg. Concentration 1 mg/mL.

Detection antibody: SMAD1 Recombinant antibody, PBS Only (Detector) 85388-2-PBS (242844C10). 100 µg. Concentration 1 mg/mL.

Unconjugated rabbit recombinant monoclonal antibody pair in PBS only storage buffer at a concentration of 1 mg/mL, ready for conjugation. Created using Proteintech's proprietary in-house recombinant technology. Recombinant production enables unrivalled batch-to-batch consistency, easy scale-up, and future security of supply.

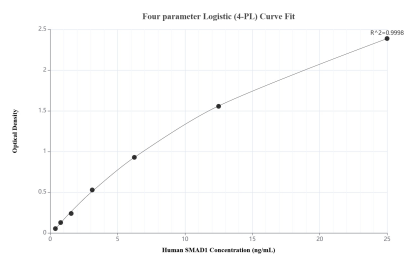
Matched antibody pairs are designed for use in a variety of assays and platforms that require matched antibody pairs.

Antibody use should be optimized for each application and assay.

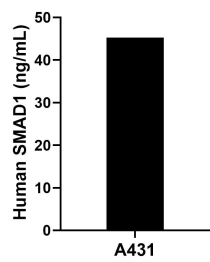
Storage

Storage:
Store at -80°C.
Storage buffer:
PBS only

Selected Validation Data



Sandwich ELISA standard curve of MP01962-1, Human SMAD1 Recombinant Matched Antibody Pair - PBS only. 85388-3-PBS was coated to a plate as the capture antibody and incubated with serial dilutions of standard Ag0701. 85388-2-PBS was HRP conjugated as the detection antibody. Range: 0.391-25 ng/mL.



The mean SMAD1 concentration was determined to be 45.30 ng/mL in A431 cell extract based on a 1.30 mg/mL extract load.