

# PGLYRP1 Recombinant Matched Antibody Pair, PBS Only

Catalog Number: **MP01966-2**

## Capture Antibody Information

**Catalog Number:**  
85610-3-PBS  
**Host:**  
Rabbit  
**Isotype:**  
IgG  
**Purification Method:**  
Protein A purification

**Clone ID:**  
243004F3  
**Reactivity:**  
human

**Conjugate:**  
Unconjugated  
**Full name:**  
peptidoglycan recognition protein 1  
**Gene ID:**  
8993

## Detection Antibody Information

**Catalog Number:**  
85610-1-PBS  
**Host:**  
Rabbit  
**Isotype:**  
IgG  
**Purification Method:**  
Protein A purification

**Clone ID:**  
243004B11  
**Reactivity:**  
human  
**GenBank:**  
NM\_005091.2

**Conjugate:**  
Unconjugated  
**Full name:**  
peptidoglycan recognition protein 1  
**Gene ID:**  
8993

## Applications

**Tested Applications:**  
Cytometric bead array, Sandwich ELISA

**Range:**  
1.563-50 ng/mL (Cytometric Bead Array)  
0.156-10 ng/mL (Sandwich ELISA)

**Recommended Dilutions:**  
It is recommended that this reagent should be titrated in each testing system to obtain optimal results.

## Product Information

MP01966-2 targets PGLYRP1 in immunoassays as a matched antibody pair. Validated in Cytometric bead array, Sandwich ELISA.

Capture antibody: PGLYRP1 Recombinant antibody, PBS Only (Capture) 85610-3-PBS (243004F3). 100 µg. Concentration 1 mg/mL.

Detection antibody: PGLYRP1 Recombinant antibody, PBS Only (Detector) 85610-1-PBS (243004B11). 100 µg. Concentration 1 mg/mL.

Unconjugated rabbit recombinant monoclonal antibody pair in PBS only storage buffer at a concentration of 1 mg/mL, ready for conjugation. Created using Proteintech's proprietary in-house recombinant technology. Recombinant production enables unrivalled batch-to-batch consistency, easy scale-up, and future security of supply.

Matched antibody pairs are designed for use in a variety of assays and platforms that require matched antibody pairs.

Antibody use should be optimized for each application and assay.

## Storage

**Storage:**  
Store at -80°C.  
**Storage buffer:**  
PBS only

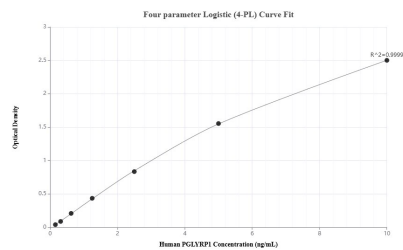
For technical support and original validation data for this product please contact:

T: 1 (888) 4PTGLAB (1-888-478-4522) (toll free in USA), or 1(312) 455-8498 (outside USA)

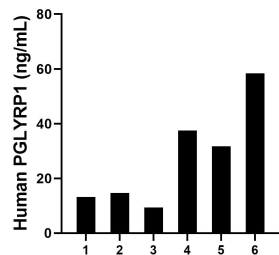
E: [proteintech@ptglab.com](mailto:proteintech@ptglab.com)  
W: [ptglab.com](http://ptglab.com)

**This product is exclusively available under Proteintech Group brand and is not available to purchase from any other manufacturer.**

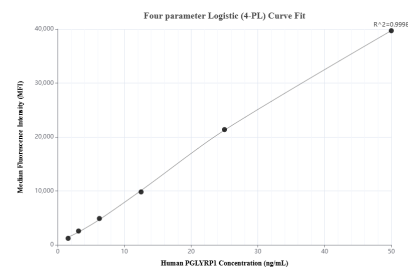
## Selected Validation Data



Sandwich ELISA standard curve of MP01966-2, Human PGLYRP1 Recombinant Matched Antibody Pair - PBS only. 85610-3-PBS was coated to a plate as the capture antibody and incubated with serial dilutions of standard Eg3122. 85610-1-PBS was HRP conjugated as the detection antibody. Range: 0.156-10 ng/mL



Saliva of six individual healthy human donors was measured. The human PGLYRP1 concentration of detected samples was determined to be 27.47 ng/mL with a range of 9.3 - 58.4 ng/mL



Cytometric bead array standard curve of MP01966-2, PGLYRP1 Recombinant Matched Antibody Pair, PBS Only. Capture antibody: 85610-3-PBS. Detection antibody: 85610-1-PBS. Standard: Eg3122. Range: 1.563-50 ng/mL