

For Research Use Only

# PrP Recombinant Matched Antibody Pair, PBS Only



Catalog Number:MP01974-3

## Capture Antibody Information

Catalog Number:  
85611-1-PBS  
Host:  
Rabbit  
Isotype:  
IgG  
Purification Method:  
Protein A purification

Clone ID:  
243104G2  
Reactivity:  
human

Conjugate:  
Unconjugated  
Full name:  
prion protein  
Gene ID:  
5621

## Detection Antibody Information

Catalog Number:  
85611-6-PBS  
Host:  
Rabbit  
Isotype:  
IgG  
Purification Method:  
Protein A purification

Clone ID:  
243104D5  
Reactivity:  
human  
GenBank:  
BC012844

Conjugate:  
Unconjugated  
Full name:  
prion protein  
Gene ID:  
5621

## Applications

Tested Applications:  
Sandwich ELISA

Range:  
78.1-5000 pg/mL (Sandwich ELISA)

Recommended Dilutions:  
It is recommended that this reagent should be titrated in each testing system to obtain optimal results.

## Product Information

MP01974-3 targets PrP in immunoassays as a matched antibody pair. Validated in Sandwich ELISA.

Capture antibody: PRNP Recombinant antibody, PBS Only (Capture) 85611-1-PBS (243104G2). 100 µg. Concentration 1 mg/mL.

Detection antibody: PRNP Recombinant antibody, PBS Only (Detector) 85611-6-PBS (243104D5). 100 µg. Concentration 1 mg/mL.

Unconjugated rabbit recombinant monoclonal antibody pair in PBS only storage buffer at a concentration of 1 mg/mL, ready for conjugation. Created using Proteintech's proprietary in-house recombinant technology. Recombinant production enables unrivalled batch-to-batch consistency, easy scale-up, and future security of supply.

Matched antibody pairs are designed for use in a variety of assays and platforms that require matched antibody pairs.

Antibody use should be optimized for each application and assay.

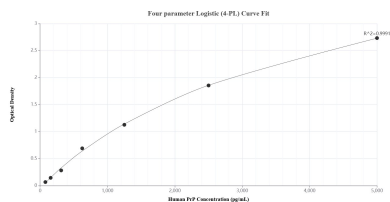
## Storage

Storage:  
Store at -80°C.  
Storage buffer:  
PBS only

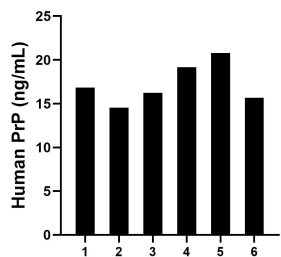
For technical support and original validation data for this product please contact:  
T: 1 (888) 4PTGLAB (1-888-478-4522) (toll free in USA), or 1(312) 455-8498 (outside USA)  
E: [proteintech@ptglab.com](mailto:proteintech@ptglab.com)  
W: [ptglab.com](http://ptglab.com)

This product is exclusively available under Proteintech Group brand and is not available to purchase from any other manufacturer.

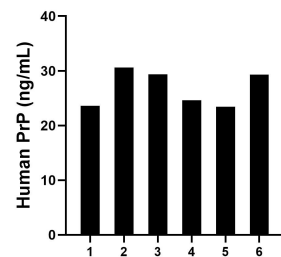
## Selected Validation Data



Sandwich ELISA standard curve of MP01974-3, Human PrP Recombinant Matched Antibody Pair - PBS only. 85611-1-PBS was coated to a plate as the capture antibody and incubated with serial dilutions of standard Eg3359. 85611-6-PBS was HRP conjugated as the detection antibody. Range: 78.1-5000 pg/mL.



Serum of six individual healthy human donors was measured. The PrP concentration of detected samples was determined to be 17.2 ng/mL with a range of 14.5-20.8 ng/mL.



Cerebrospinal fluid of six individual human donors was measured. The PrP concentration of detected samples was determined to be 26.8 ng/mL with a range of 23.4-30.6 ng/mL.