

CXCL5 Recombinant Matched Antibody Pair, PBS Only

Catalog Number: **MP01987-3**

Capture Antibody Information

Catalog Number:
85606-3-PBS
Host:
Rabbit
Isotype:
IgG
Purification Method:
Protein A purification

Clone ID:
242885F11
Reactivity:
human

Conjugate:
Unconjugated
Full name:
chemokine (C-X-C motif) ligand 5
Gene ID:
6374

Detection Antibody Information

Catalog Number:
85606-1-PBS
Host:
Rabbit
Isotype:
IgG
Purification Method:
Protein A purification

Clone ID:
242885A10
Reactivity:
human
GenBank:
NM_002994.4

Conjugate:
Unconjugated
Full name:
chemokine (C-X-C motif) ligand 5
Gene ID:
6374

Applications

Tested Applications:
Sandwich ELISA

Range:
78.1-5000 pg/mL (Sandwich ELISA)

Recommended Dilutions:
It is recommended that this reagent should be titrated in each testing system to obtain optimal results.

Product Information

MP01987-3 targets CXCL5 in immunoassays as a matched antibody pair. Validated in Sandwich ELISA.

Capture antibody: CXCL5 Recombinant antibody, PBS Only (Capture/Detector) 85606-3-PBS (242885F11). 100 µg. Concentration 1 mg/mL.

Detection antibody: CXCL5 Recombinant antibody, PBS Only (Capture/Detector) 85606-1-PBS (242885A10). 100 µg. Concentration 1 mg/mL.

Unconjugated rabbit recombinant monoclonal antibody pair in PBS only storage buffer at a concentration of 1 mg/mL, ready for conjugation. Created using Proteintech's proprietary in-house recombinant technology. Recombinant production enables unrivalled batch-to-batch consistency, easy scale-up, and future security of supply.

Matched antibody pairs are designed for use in a variety of assays and platforms that require matched antibody pairs.

Antibody use should be optimized for each application and assay.

Storage

Storage:
Store at -80°C.
Storage buffer:
PBS only

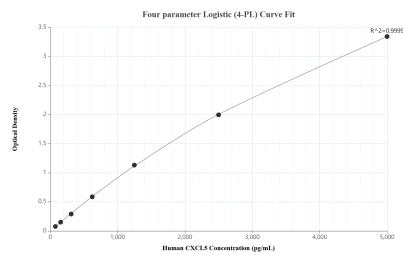
For technical support and original validation data for this product please contact:

T: 1 (888) 4PTGLAB (1-888-478-4522) (toll free in USA), or 1(312) 455-8498 (outside USA)

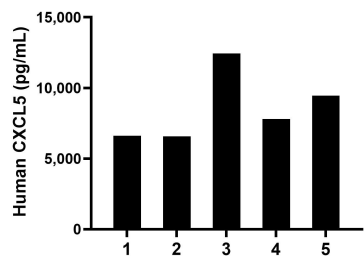
E: proteintech@ptglab.com
W: ptglab.com

This product is exclusively available under Proteintech Group brand and is not available to purchase from any other manufacturer.

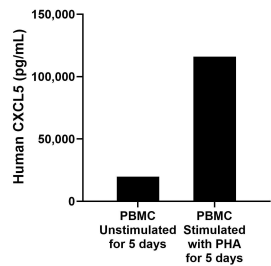
Selected Validation Data



Sandwich ELISA standard curve of MP01987-3, Human CXCL5 Recombinant Matched Antibody Pair - PBS only. 85606-3-PBS was coated to a plate as the capture antibody and incubated with serial dilutions of standard Eg2939. 85606-1-PBS was HRP conjugated as the detection antibody. Range: 78.1-5000 pg/mL



Serum of five individual healthy human donors was measured. The CXCL5 concentration of detected samples was determined to be 8,576.4 pg/mL with a range of 6,580.8-12,447.7 pg/mL



Human peripheral blood mononuclear cells (PBMC) were cultured unstimulated or stimulated with 10 µg/mL PHA for 5 days. The mean CXCL5 concentration was determined to be 19,798.6 pg/mL in unstimulated PBMC supernatant, 115,946.9 pg/mL in PHA stimulated PBMC supernatant.