

# Mouse Calreticulin Recombinant Matched Antibody Pair, PBS Only

Catalog Number: **MP01992-1**

## Capture Antibody Information

**Catalog Number:**  
85593-4-PBS  
**Host:**  
Rabbit  
**Isotype:**  
IgG  
**Purification Method:**  
Protein A purification

**Clone ID:**  
243011C6  
**Reactivity:**  
mouse

**Conjugate:**  
Unconjugated  
**Full name:**  
calreticulin  
**Gene ID:**  
12317

## Detection Antibody Information

**Catalog Number:**  
85593-3-PBS  
**Host:**  
Rabbit  
**Isotype:**  
IgG  
**Purification Method:**  
Protein A purification

**Clone ID:**  
243011F8  
**Reactivity:**  
mouse  
**GenBank:**  
NM\_007591.3

**Conjugate:**  
Unconjugated  
**Full name:**  
calreticulin  
**Gene ID:**  
12317

## Applications

**Tested Applications:**  
Cytometric bead array, Sandwich  
ELISA

**Range:**  
0.781-100 ng/mL (Cytometric Bead  
Array)  
39.1-2500 pg/mL (Sandwich ELISA)

**Recommended Dilutions:**  
It is recommended that this reagent  
should be titrated in each testing  
system to obtain optimal results.

## Product Information

MP01992-1 targets Calreticulin in immunoassays as a matched antibody pair. Validated in Cytometric bead array, Sandwich ELISA.

Capture antibody: Mouse Calr Recombinant antibody, PBS Only (Capture) 85593-4-PBS (243011C6). 100 µg. Concentration 1 mg/mL.

Detection antibody: Mouse Calr Recombinant antibody, PBS Only (Detector) 85593-3-PBS (243011F8). 100 µg. Concentration 1 mg/mL.

Unconjugated rabbit recombinant monoclonal antibody pair in PBS only storage buffer at a concentration of 1 mg/mL, ready for conjugation. Created using Proteintech's proprietary in-house recombinant technology. Recombinant production enables unrivalled batch-to-batch consistency, easy scale-up, and future security of supply.

Matched antibody pairs are designed for use in a variety of assays and platforms that require matched antibody pairs.

Antibody use should be optimized for each application and assay.

## Storage

**Storage:**  
Store at -80°C.  
**Storage buffer:**  
PBS only

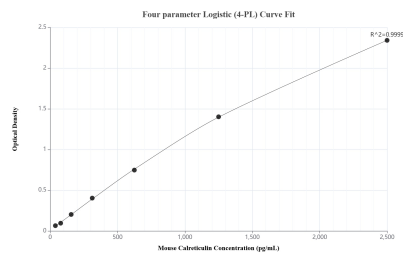
For technical support and original validation data for this product please contact:

T: 1 (888) 4PTGLAB (1-888-478-4522) (toll free  
in USA), or 1(312) 455-8498 (outside USA)

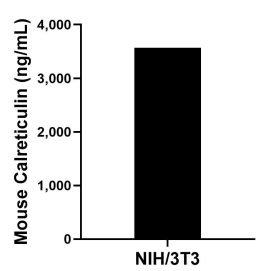
E: [proteintech@ptglab.com](mailto:proteintech@ptglab.com)  
W: [ptglab.com](http://ptglab.com)

**This product is exclusively available under Proteintech  
Group brand and is not available to purchase from any  
other manufacturer.**

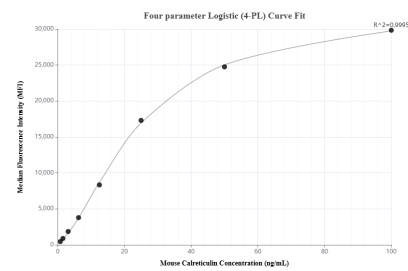
## Selected Validation Data



Sandwich ELISA standard curve of MP01992-1, Mouse Calreticulin Recombinant Matched Antibody Pair - PBS only. 85593-4-PBS was coated to a plate as the capture antibody and incubated with serial dilutions of standard Eg3005. 85593-3-PBS was HRP conjugated as the detection antibody. Range: 39.1-2500 pg/mL



The mean Calreticulin concentration was determined to be 3,567.8 ng/mL in NIH/3T3 cell extract based on a 1.5 mg/mL extract load.



Cytometric bead array standard curve of MP01992-1, MOUSE Calreticulin Recombinant Matched Antibody Pair, PBS Only. Capture antibody: 85593-4-PBS. Detection antibody: 85593-3-PBS. Standard: Eg3005. Range: 0.781-100 ng/mL