

ALDH1B1 Recombinant Matched Antibody Pair, PBS Only

Catalog Number: **MP01995-1**

Capture Antibody Information

Catalog Number:
85426-1-PBS
Host:
Rabbit
Isotype:
IgG
Purification Method:
Protein A purification

Clone ID:
242944C5
Reactivity:
human
Immunogen Catalog Number:
Ag7144

Conjugate:
Unconjugated
Full name:
aldehyde dehydrogenase 1 family, member B1
Gene ID:
219

Detection Antibody Information

Catalog Number:
85426-2-PBS
Host:
Rabbit
Isotype:
IgG
Purification Method:
Protein A purification

Clone ID:
242944E7
Reactivity:
human
GenBank:
BC001619
Immunogen Catalog Number:
Ag7144

Conjugate:
Unconjugated
Full name:
aldehyde dehydrogenase 1 family, member B1
Gene ID:
219

Applications

Tested Applications:
Cytometric bead array, Sandwich ELISA

Range:
0.781-100 ng/mL (Cytometric Bead Array)
0.791-50 ng/mL (Sandwich ELISA)

Recommended Dilutions:
It is recommended that this reagent should be titrated in each testing system to obtain optimal results.

Product Information

MP01995-1 targets ALDH1B1 in immunoassays as a matched antibody pair. Validated in Cytometric bead array, Sandwich ELISA.

Capture antibody: ALDH1B1 Recombinant antibody, PBS Only (Capture) 85426-1-PBS (242944C5). 100 µg. Concentration 1 mg/mL.

Detection antibody: ALDH1B1 Recombinant antibody, PBS Only (Detector) 85426-2-PBS (242944E7). 100 µg. Concentration 1 mg/mL.

Unconjugated rabbit recombinant monoclonal antibody pair in PBS only storage buffer at a concentration of 1 mg/mL, ready for conjugation. Created using Proteintech's proprietary in-house recombinant technology. Recombinant production enables unrivalled batch-to-batch consistency, easy scale-up, and future security of supply.

Matched antibody pairs are designed for use in a variety of assays and platforms that require matched antibody pairs.

Antibody use should be optimized for each application and assay.

Storage

Storage:
Store at -80°C.
Storage buffer:
PBS only

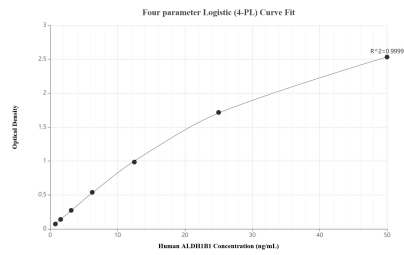
For technical support and original validation data for this product please contact:

T: 1 (888) 4PTGLAB (1-888-478-4522) (toll free in USA), or 1(312) 455-8498 (outside USA)

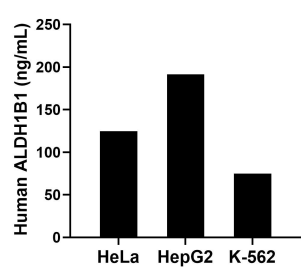
E: proteintech@ptglab.com
W: ptglab.com

This product is exclusively available under Proteintech Group brand and is not available to purchase from any other manufacturer.

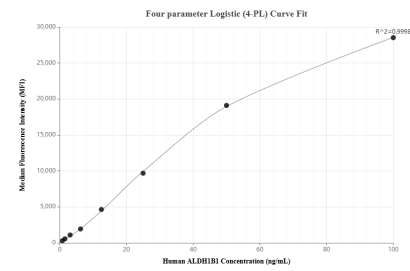
Selected Validation Data



Sandwich ELISA standard curve of MP01995-1, Human ALDH1B1 Recombinant Matched Antibody Pair - PBS only. 85426-1-PBS was coated to a plate as the capture antibody and incubated with serial dilutions of standard Ag7144. 85426-2-PBS was HRP conjugated as the detection antibody. Range: 0.791-50 ng/mL.



The mean ALDH1B1 concentration was determined to be 124.73 ng/mL in HeLa cell extract based on a 1.80 mg/mL extract load, 191.33 ng/mL in HepG2 cell extract based on a 1.80 mg/mL extract load and 74.97 ng/mL in K-562 cell extract based on a 2.50 mg/mL extract load.



Cytometric bead array standard curve of MP01995-1, ALDH1B1 Recombinant Matched Antibody Pair, PBS Only. Capture antibody: 85426-1-PBS. Detection antibody: 85426-2-PBS. Standard: Ag7144. Range: 0.781-100 ng/mL.