

For Research Use Only



# HPGDS Recombinant Matched Antibody Pair, PBS Only

Catalog Number:MP02001-3

## Capture Antibody Information

Catalog Number:  
85446-1-PBS  
Host:  
Rabbit  
Isotype:  
IgG  
Purification Method:  
Protein A purification

Clone ID:  
242980A5  
Reactivity:  
human  
Immunogen Catalog Number:  
Ag18290

Conjugate:  
Unconjugated  
Full name:  
prostaglandin D2 synthase,  
hematopoietic  
Gene ID:  
27306

## Detection Antibody Information

Catalog Number:  
85446-4-PBS  
Host:  
Rabbit  
Isotype:  
IgG  
Purification Method:  
Protein A purification

Clone ID:  
242980E6  
Reactivity:  
human  
GenBank:  
BC020734  
Immunogen Catalog Number:  
Ag18290

Conjugate:  
Unconjugated  
Full name:  
prostaglandin D2 synthase,  
hematopoietic  
Gene ID:  
27306

## Applications

Tested Applications:  
Sandwich ELISA

Range:  
156-5000 pg/mL (Sandwich ELISA)

Recommended Dilutions:  
It is recommended that this reagent should be titrated in each testing system to obtain optimal results.

## Product Information

MP02001-3 targets HPGDS in immunoassays as a matched antibody pair. Validated in Sandwich ELISA.

Capture antibody: HPGDS Recombinant antibody, PBS Only (Capture/Detector) 85446-1-PBS (242980A5). 100 µg. Concentration 1 mg/mL.

Detection antibody: HPGDS Recombinant antibody, PBS Only (Capture/Detector) 85446-4-PBS (242980E6). 100 µg. Concentration 1 mg/mL.

Unconjugated rabbit recombinant monoclonal antibody pair in PBS only storage buffer at a concentration of 1 mg/mL, ready for conjugation. Created using Proteintech's proprietary in-house recombinant technology. Recombinant production enables unrivalled batch-to-batch consistency, easy scale-up, and future security of supply.

Matched antibody pairs are designed for use in a variety of assays and platforms that require matched antibody pairs.

Antibody use should be optimized for each application and assay.

## Storage

Storage:  
Store at -80°C.  
Storage buffer:  
PBS only

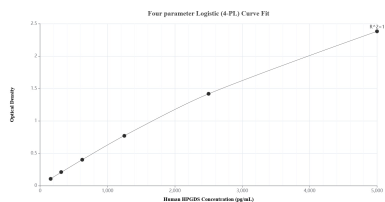
For technical support and original validation data for this product please contact:

T: 1 (888) 4PTGLAB (1-888-478-4522) (toll free in USA), or 1(312) 455-8498 (outside USA)

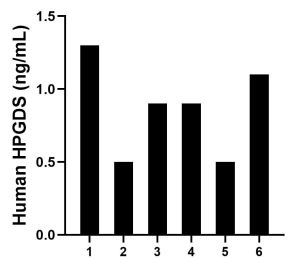
E: [proteintech@ptglab.com](mailto:proteintech@ptglab.com)  
W: [ptglab.com](http://ptglab.com)

This product is exclusively available under Proteintech Group brand and is not available to purchase from any other manufacturer.

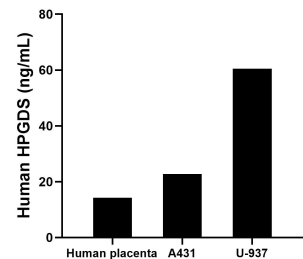
## Selected Validation Data



Sandwich ELISA standard curve of MP02001-3, Human HPGDS Recombinant Matched Antibody Pair - PBS only. 85446-1-PBS was coated to a plate as the capture antibody and incubated with serial dilutions of standard Ag18290. 85446-4-PBS was HRP conjugated as the detection antibody. Range: 156-5000 pg/mL



Serum of six individual healthy human donors was measured. The HPGDS concentration of detected samples was determined to be 0.9 ng/mL with a range of 0.5-1.3 ng/mL



The mean HPGDS concentration was determined to be 14.2 ng/mL in human placenta extract based on a 1.3 mg/mL extract load, 22.7 ng/mL in A431 cell extract based on a 3.7 mg/mL extract load and 60.5 ng/mL in U-937 cell extract based on a 2.2 mg/mL extract load.