

# SF3B4 Recombinant Matched Antibody Pair, PBS Only

Catalog Number: **MP02012-3**

## Capture Antibody Information

Catalog Number:  
85663-6-PBSHost:  
RabbitIsotype:  
IgGPurification Method:  
Protein A purificationClone ID:  
243098D2Reactivity:  
humanImmunogen Catalog Number:  
Ag0737Conjugate:  
UnconjugatedFull name:  
splicing factor 3b, subunit 4, 49kDaGene ID:  
10262

## Detection Antibody Information

Catalog Number:  
85663-2-PBSHost:  
RabbitIsotype:  
IgGPurification Method:  
Protein A purificationClone ID:  
243098B6Reactivity:  
humanGenBank:  
BC004273Immunogen Catalog Number:  
Ag0737Conjugate:  
UnconjugatedFull name:  
splicing factor 3b, subunit 4, 49kDaGene ID:  
10262

## Applications

Tested Applications:  
Sandwich ELISARange:  
0.234-15 ng/mL (Sandwich ELISA)Recommended Dilutions:  
It is recommended that this reagent should be titrated in each testing system to obtain optimal results.

## Product Information

MP02012-3 targets SF3B4 in immunoassays as a matched antibody pair. Validated in Sandwich ELISA.

Capture antibody: SF3B4 Recombinant antibody, PBS Only (Capture) 85663-6-PBS (243098D2). 100 µg. Concentration 1 mg/mL.

Detection antibody: SF3B4 Recombinant antibody, PBS Only (Detector) 85663-2-PBS (243098B6). 100 µg. Concentration 1 mg/mL.

Unconjugated rabbit recombinant monoclonal antibody pair in PBS only storage buffer at a concentration of 1 mg/mL, ready for conjugation. Created using Proteintech's proprietary in-house recombinant technology. Recombinant production enables unrivalled batch-to-batch consistency, easy scale-up, and future security of supply.

Matched antibody pairs are designed for use in a variety of assays and platforms that require matched antibody pairs.

Antibody use should be optimized for each application and assay.

## Storage

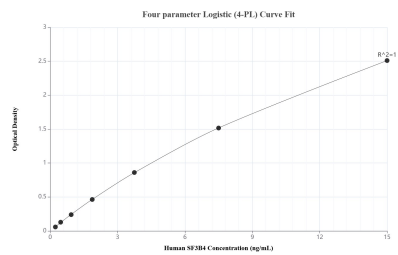
Storage:  
Store at -80°C.  
Storage buffer:  
PBS only

For technical support and original validation data for this product please contact:

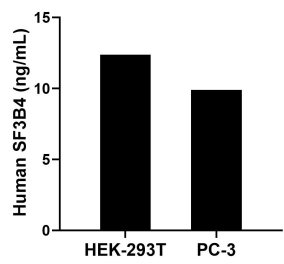
T: 1 (888) 4PTGLAB (1-888-478-4522) (toll free in USA), or 1(312) 455-8498 (outside USA)

E: [proteintech@ptglab.com](mailto:proteintech@ptglab.com)  
W: [ptglab.com](http://ptglab.com)**This product is exclusively available under Proteintech Group brand and is not available to purchase from any other manufacturer.**

## Selected Validation Data



Sandwich ELISA standard curve of MP02012-3, Human SF3B4 Recombinant Matched Antibody Pair - PBS only. 85663-6-PBS was coated to a plate as the capture antibody and incubated with serial dilutions of standard Ag0737. 85663-2-PBS was HRP conjugated as the detection antibody. Range: 0.234-15 ng/mL.



The mean SF3B4 concentration was determined to be 12.37 ng/mL in HEK-293T cell extract based on a 2.80 mg/mL extract load and 9.89 ng/mL in PC-3 cell extract based on a 2.50 mg/mL extract load.