

Mouse IL-13RA2 Recombinant Matched Antibody Pair, PBS Only

Catalog Number: **MP02013-3**

Capture Antibody Information

Catalog Number:
98407-3-PBS
Host:
Rabbit
Isotype:
IgG
Purification Method:
Protein A purification

Clone ID:
242742C4
Reactivity:
mouse

Conjugate:
Unconjugated
Full name:
interleukin 13 receptor, alpha 2
Gene ID:
16165

Detection Antibody Information

Catalog Number:
85631-5-PBS
Host:
Rabbit
Isotype:
IgG
Purification Method:
Protein A purification

Clone ID:
242742C7
Reactivity:
mouse
GenBank:
NM_008356.4

Conjugate:
Unconjugated
Full name:
interleukin 13 receptor, alpha 2
Gene ID:
16165

Applications

Tested Applications:
Sandwich ELISA

Range:
0.156-10 ng/mL (Sandwich ELISA)

Recommended Dilutions:
It is recommended that this reagent should be titrated in each testing system to obtain optimal results.

Product Information

MP02013-3 targets IL-13RA2 in immunoassays as a matched antibody pair. Validated in Sandwich ELISA.

Capture antibody: Anti-Mouse IL13ra2 Rabbit Recombinant Antibody, PBS Only (Capture) 98407-3-PBS (242742C4). 100 µg. Concentration 1 mg/mL.

Detection antibody: Mouse IL13ra2 Recombinant antibody, PBS Only (Detector) 85631-5-PBS (242742C7). 100 µg. Concentration 1 mg/mL.

Unconjugated rabbit recombinant monoclonal antibody pair in PBS only storage buffer at a concentration of 1 mg/mL, ready for conjugation. Created using Proteintech's proprietary in-house recombinant technology. Recombinant production enables unrivalled batch-to-batch consistency, easy scale-up, and future security of supply.

Matched antibody pairs are designed for use in a variety of assays and platforms that require matched antibody pairs.

Antibody use should be optimized for each application and assay.

Storage

Storage:
Store at -80°C.
Storage buffer:
PBS only

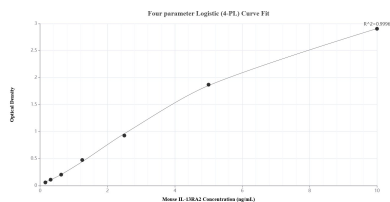
For technical support and original validation data for this product please contact:

T: 1 (888) 4PTGLAB (1-888-478-4522) (toll free in USA), or 1(312) 455-8498 (outside USA)

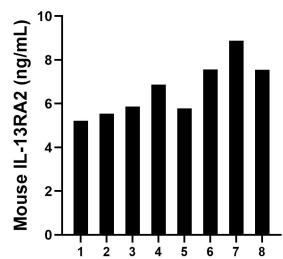
E: proteintech@ptglab.com
W: ptglab.com

This product is exclusively available under Proteintech Group brand and is not available to purchase from any other manufacturer.

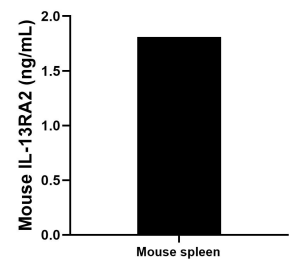
Selected Validation Data



Sandwich ELISA standard curve of MP02013-3, Mouse IL-13RA2 Recombinant Matched Antibody Pair - PBS only. 98407-3-PBS was coated to a plate as the capture antibody and incubated with serial dilutions of standard Eg3118. 85631-5-PBS was HRP conjugated as the detection antibody. Range: 0.156-10 ng/mL



Serum of eight mice was measured. The IL-13RA2 concentration of detected samples was determined to be 6.65 ng/mL with a range of 5.21-8.88 ng/mL.



The mean IL-13RA2 concentration was determined to be 1.81 ng/mL in mouse spleen tissue homogenates extract based on a 2.30 mg/mL extract load.