

UBE4B Recombinant Matched Antibody Pair, PBS Only

Catalog Number: **MP02017-3**

Capture Antibody Information

Catalog Number:
85332-5-PBS
Host:
Rabbit
Isotype:
IgG
Purification Method:
Protein A purification

Clone ID:
242218F2
Reactivity:
human
Immunogen Catalog Number:
Ag12836

Conjugate:
Unconjugated
Full name:
ubiquitination factor E4B (UFD2 homolog, yeast)
Gene ID:
10277

Detection Antibody Information

Catalog Number:
85332-3-PBS
Host:
Rabbit
Isotype:
IgG
Purification Method:
Protein A purification

Clone ID:
242218B10
Reactivity:
human
GenBank:
BC093696
Immunogen Catalog Number:
Ag12836

Conjugate:
Unconjugated
Full name:
ubiquitination factor E4B (UFD2 homolog, yeast)
Gene ID:
10277

Applications

Tested Applications:
Sandwich ELISA

Range:
46.9-3000 pg/mL (Sandwich ELISA)

Recommended Dilutions:
It is recommended that this reagent should be titrated in each testing system to obtain optimal results.

Product Information

MP02017-3 targets UBE4B in immunoassays as a matched antibody pair. Validated in Sandwich ELISA.

Capture antibody: UBE4B Recombinant antibody, PBS Only (Capture/Detector) 85332-5-PBS (242218F2). 100 µg. Concentration 1 mg/mL.

Detection antibody: UBE4B Recombinant antibody, PBS Only (Capture/Detector) 85332-3-PBS (242218B10). 100 µg. Concentration 1 mg/mL.

Unconjugated rabbit recombinant monoclonal antibody pair in PBS only storage buffer at a concentration of 1 mg/mL, ready for conjugation. Created using Proteintech's proprietary in-house recombinant technology. Recombinant production enables unrivalled batch-to-batch consistency, easy scale-up, and future security of supply.

Matched antibody pairs are designed for use in a variety of assays and platforms that require matched antibody pairs.

Antibody use should be optimized for each application and assay.

Storage

Storage:
Store at -80°C.
Storage buffer:
PBS only

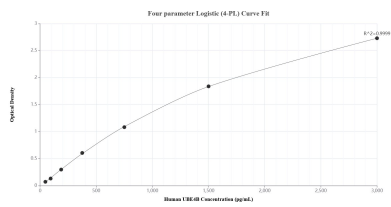
For technical support and original validation data for this product please contact:

T: 1 (888) 4PTGLAB (1-888-478-4522) (toll free in USA), or 1(312) 455-8498 (outside USA)

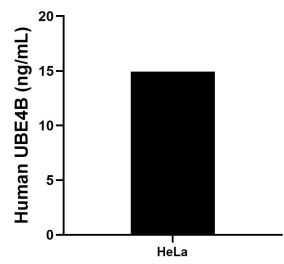
E: proteintech@ptglab.com
W: ptglab.com

This product is exclusively available under Proteintech Group brand and is not available to purchase from any other manufacturer.

Selected Validation Data



Sandwich ELISA standard curve of MP02017-3, Human UBE4B Recombinant Matched Antibody Pair - PBS only. 85332-5-PBS was coated to a plate as the capture antibody and incubated with serial dilutions of standard Ag12836. 85332-3-PBS was HRP conjugated as the detection antibody. Range: 46.9-3000 pg/mL.



The mean UBE4B concentration was determined to be 14.9 ng/mL in HeLa cell extract based on a 2.1 mg/mL extract load.