

For Research Use Only



HOMER1 Recombinant Matched Antibody Pair, PBS Only

Catalog Number:MP02028-3

Capture Antibody Information

Catalog Number:
85692-6-PBS
Host:
Rabbit
Isotype:
IgG
Purification Method:
Protein A purification

Clone ID:
243007E1
Reactivity:
human
Immunogen Catalog Number:
Ag3109

Conjugate:
Unconjugated
Full name:
homer homolog 1 (Drosophila)
Gene ID:
9456

Detection Antibody Information

Catalog Number:
85692-5-PBS
Host:
Rabbit
Isotype:
IgG
Purification Method:
Protein A purification

Clone ID:
243007B4
Reactivity:
human
GenBank:
BC015502
Immunogen Catalog Number:
Ag3109

Conjugate:
Unconjugated
Full name:
homer homolog 1 (Drosophila)
Gene ID:
9456

Applications

Tested Applications:
Sandwich ELISA

Range:
78.1-5000 pg/mL (Sandwich ELISA)

Recommended Dilutions:
It is recommended that this reagent should be titrated in each testing system to obtain optimal results.

Product Information

MP02028-3 targets HOMER1 in immunoassays as a matched antibody pair. Validated in Sandwich ELISA.

Capture antibody: HOMER1 Recombinant antibody, PBS Only (Capture) 85692-6-PBS (243007E1). 100 µg. Concentration 1 mg/mL.

Detection antibody: HOMER1 Recombinant antibody, PBS Only (Detector) 85692-5-PBS (243007B4). 100 µg. Concentration 1 mg/mL.

Unconjugated rabbit recombinant monoclonal antibody pair in PBS only storage buffer at a concentration of 1 mg/mL, ready for conjugation. Created using Proteintech's proprietary in-house recombinant technology. Recombinant production enables unrivalled batch-to-batch consistency, easy scale-up, and future security of supply.

Matched antibody pairs are designed for use in a variety of assays and platforms that require matched antibody pairs.

Antibody use should be optimized for each application and assay.

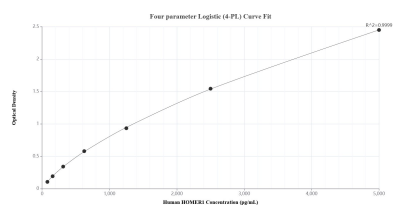
Storage

Storage:
Store at -80°C.
Storage buffer:
PBS only

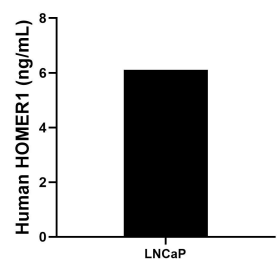
For technical support and original validation data for this product please contact:
T: 1 (888) 4PTGLAB (1-888-478-4522) (toll free in USA), or 1(312) 455-8498 (outside USA)
E: proteintech@ptglab.com
W: ptglab.com

This product is exclusively available under Proteintech Group brand and is not available to purchase from any other manufacturer.

Selected Validation Data



Sandwich ELISA standard curve of MP02028-3, Human HOMER1 Recombinant Matched Antibody Pair - PBS only. 85692-6-PBS was coated to a plate as the capture antibody and incubated with serial dilutions of standard Ag3109. 85692-5-PBS was HRP conjugated as the detection antibody. Range: 78.1-5000 pg/mL.



The mean HOMER1 concentration was determined to be 6.1 ng/mL in LNCaP cell extract based on a 2.6 mg/mL extract load.