

Serpin E1/PAI-1 Recombinant Matched Antibody Pair, PBS Only

Catalog Number: **MP02035-3**

Capture Antibody Information

Catalog Number:
85683-4-PBS
Host:
Rabbit
Isotype:
IgG
Purification Method:
Protein A purification

Clone ID:
243115B1
Reactivity:
human

Conjugate:
Unconjugated
Full name:
serpin peptidase inhibitor, clade E (nexin, plasminogen activator inhibitor type 1), member 1
Gene ID:
5054

Detection Antibody Information

Catalog Number:
85683-2-PBS
Host:
Rabbit
Isotype:
IgG
Purification Method:
Protein A purification

Clone ID:
243115D3
Reactivity:
human
GenBank:
BC010860

Conjugate:
Unconjugated
Full name:
serpin peptidase inhibitor, clade E (nexin, plasminogen activator inhibitor type 1), member 1
Gene ID:
5054

Applications

Tested Applications:
Sandwich ELISA

Range:
0.391-25 ng/mL (Sandwich ELISA)

Recommended Dilutions:
It is recommended that this reagent should be titrated in each testing system to obtain optimal results.

Product Information

MP02035-3 targets Serpin E1/PAI-1 in immunoassays as a matched antibody pair. Validated in Sandwich ELISA.

Capture antibody: SERPINE1 Recombinant antibody, PBS Only (Capture) 85683-4-PBS (243115B1). 100 µg. Concentration 1 mg/mL.

Detection antibody: SERPINE1 Recombinant antibody, PBS Only (Detector) 85683-2-PBS (243115D3). 100 µg. Concentration 1 mg/mL.

Unconjugated rabbit recombinant monoclonal antibody pair in PBS only storage buffer at a concentration of 1 mg/mL, ready for conjugation. Created using Proteintech's proprietary in-house recombinant technology. Recombinant production enables unrivalled batch-to-batch consistency, easy scale-up, and future security of supply.

Matched antibody pairs are designed for use in a variety of assays and platforms that require matched antibody pairs.

Antibody use should be optimized for each application and assay.

Storage

Storage:
Store at -80°C.
Storage buffer:
PBS only

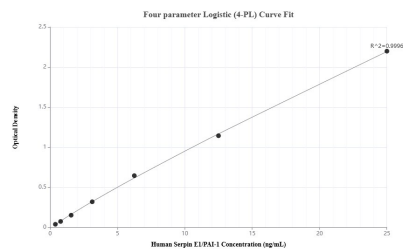
For technical support and original validation data for this product please contact:

T: 1 (888) 4PTGLAB (1-888-478-4522) (toll free in USA), or 1(312) 455-8498 (outside USA)

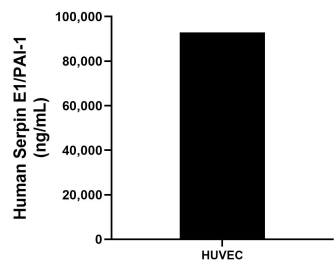
E: proteintech@ptglab.com
W: ptglab.com

This product is exclusively available under Proteintech Group brand and is not available to purchase from any other manufacturer.

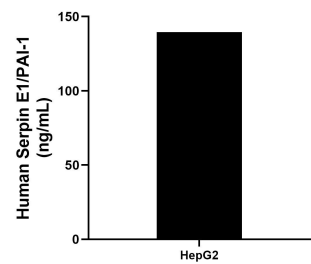
Selected Validation Data



Sandwich ELISA standard curve of MP02035-3, Human Serpin E1/PAI-1 Recombinant Matched Antibody Pair - PBS only. 85683-4-PBS was coated to a plate as the capture antibody and incubated with serial dilutions of standard Eg3798. 85683-2-PBS was HRP conjugated as the detection antibody. Range: 0.391-25 ng/mL



The mean Serpin E1/PAI-1 concentration was determined to be 92,887.56 ng/mL in HUVEC cell extract based on a 1.4 mg/mL extract load.



HepG2 were cultured in DMEM supplemented with 10% fetal bovine serum, 2.5 mM L-glutamine, 100 U/mL penicillin, and 100 µg/mL streptomycin sulfate. An aliquot of the cell culture supernate was removed, assayed for human Serpin E1/PAI-1, and measured 139.44 ng/mL