

Mouse IL-12RB1 Recombinant Matched Antibody Pair, PBS Only

Catalog Number: **MP02048-1**

Capture Antibody Information

Catalog Number:

85661-4-PBS

Host:

Rabbit

Isotype:

IgG

Purification Method:

Protein A purification

Clone ID:

243021C4

Reactivity:

mouse

Conjugate:

Unconjugated

Full name:

interleukin 12 receptor, beta 1

Gene ID:

16161

Detection Antibody Information

Catalog Number:

85661-3-PBS

Host:

Rabbit

Isotype:

IgG

Purification Method:

Protein A purification

Clone ID:

243021F7

Reactivity:

mouse

GenBank:

NM_008353.2

Conjugate:

Unconjugated

Full name:

interleukin 12 receptor, beta 1

Gene ID:

16161

Applications

Tested Applications:

Cytometric bead array, Sandwich ELISA

Range:

0.781-100 ng/mL (Cytometric Bead Array)
0.781-50 ng/mL (Sandwich ELISA)

Recommended Dilutions:

It is recommended that this reagent should be titrated in each testing system to obtain optimal results.

Product Information

MP02048-1 targets IL-12RB1 in immunoassays as a matched antibody pair. Validated in Cytometric bead array, Sandwich ELISA.

Capture antibody: Mouse IL-12 R beta 1 Recombinant antibody, PBS Only (Capture) 85661-4-PBS (243021C4). 100 µg. Concentration 1 mg/mL.

Detection antibody: Mouse IL-12 R beta 1 Recombinant antibody, PBS Only (Detector) 85661-3-PBS (243021F7). 100 µg. Concentration 1 mg/mL.

Unconjugated rabbit recombinant monoclonal antibody pair in PBS only storage buffer at a concentration of 1 mg/mL, ready for conjugation. Created using Proteintech's proprietary in-house recombinant technology. Recombinant production enables unrivalled batch-to-batch consistency, easy scale-up, and future security of supply.

Matched antibody pairs are designed for use in a variety of assays and platforms that require matched antibody pairs.

Antibody use should be optimized for each application and assay.

Storage

Storage:

Store at -80°C.

Storage buffer:

PBS only

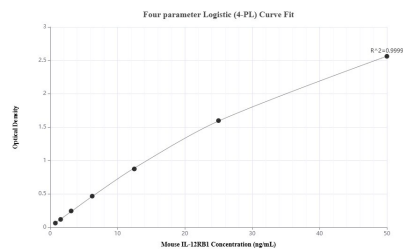
For technical support and original validation data for this product please contact:

T: 1 (888) 4PTGLAB (1-888-478-4522) (toll free in USA), or 1(312) 455-8498 (outside USA)

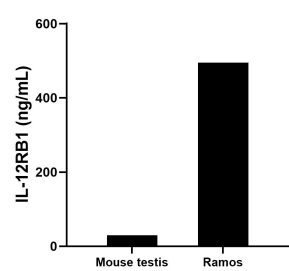
E: proteintech@ptglab.com
W: ptglab.com

This product is exclusively available under Proteintech Group brand and is not available to purchase from any other manufacturer.

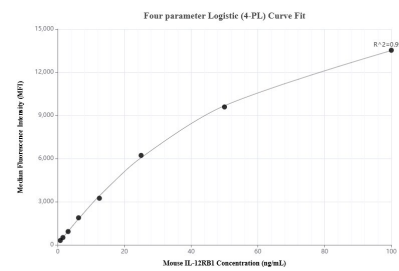
Selected Validation Data



Sandwich ELISA standard curve of MP02048-1, Mouse IL-12RB1 Recombinant Matched Antibody Pair - PBS only. 85661-4-PBS was coated to a plate as the capture antibody and incubated with serial dilutions of standard Eg3196. 85661-3-PBS was HRP conjugated as the detection antibody. Range: 0.781-50 ng/mL



The mean IL-12RB1 concentration was determined to be 29.82 ng/mL in mouse testis tissue extract based on a 1.1 mg/mL extract load and 495.17 ng/mL in Ramos cell extract based on a 1.4 mg/mL extract load.



Cytometric bead array standard curve of MP02048-1, MOUSE IL-12RB1 Recombinant Matched Antibody Pair, PBS Only. Capture antibody: 85661-4-PBS. Detection antibody: 85661-3-PBS. Standard: Eg3196. Range: 0.781-100 ng/mL