

C1S Recombinant Matched Antibody Pair, PBS Only

Catalog Number: **MP02077-3**

Capture Antibody Information

Catalog Number:
85736-5-PBS
Host:
Rabbit
Isotype:
IgG
Purification Method:
Protein A purification

Clone ID:
250031G6
Reactivity:
human
Immunogen Catalog Number:
Ag5977

Conjugate:
Unconjugated
Full name:
complement component 1, s subcomponent
Gene ID:
716

Detection Antibody Information

Catalog Number:
85736-3-PBS
Host:
Rabbit
Isotype:
IgG
Purification Method:
Protein A purification

Clone ID:
250031C10
Reactivity:
human
GenBank:
BC056903
Immunogen Catalog Number:
Ag5977

Conjugate:
Unconjugated
Full name:
complement component 1, s subcomponent
Gene ID:
716

Applications

Tested Applications:
Sandwich ELISA

Range:
0.313-20 ng/mL (Sandwich ELISA)

Recommended Dilutions:
It is recommended that this reagent should be titrated in each testing system to obtain optimal results.

Product Information

MP02077-3 targets C1S in immunoassays as a matched antibody pair. Validated in Sandwich ELISA.

Capture antibody: C1S Recombinant monoclonal antibody, PBS Only (Capture) 85736-5-PBS (250031G6). 100 µg. Concentration 1 mg/mL.

Detection antibody: C1S Recombinant monoclonal antibody, PBS Only (Detector) 85736-3-PBS (250031C10). 100 µg. Concentration 1 mg/mL.

Unconjugated rabbit recombinant monoclonal antibody pair in PBS only storage buffer at a concentration of 1 mg/mL, ready for conjugation. Created using Proteintech's proprietary in-house recombinant technology. Recombinant production enables unrivalled batch-to-batch consistency, easy scale-up, and future security of supply.

Matched antibody pairs are designed for use in a variety of assays and platforms that require matched antibody pairs.

Antibody use should be optimized for each application and assay.

Storage

Storage:
Store at -80°C.
Storage buffer:
PBS only

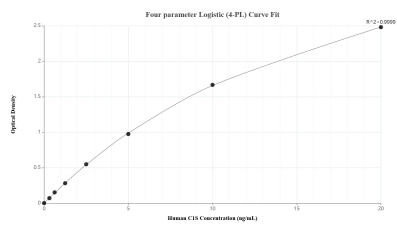
For technical support and original validation data for this product please contact:

T: 1 (888) 4PTGLAB (1-888-478-4522) (toll free in USA), or 1(312) 455-8498 (outside USA)

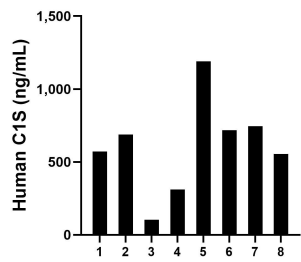
E: proteintech@ptglab.com
W: ptglab.com

This product is exclusively available under Proteintech Group brand and is not available to purchase from any other manufacturer.

Selected Validation Data



Sandwich ELISA standard curve of MP02077-3, Human C1S Recombinant Matched Antibody Pair - PBS only. 85736-5-PBS was coated to a plate as the capture antibody and incubated with serial dilutions of standard Ag5977. 85736-3-PBS was HRP conjugated as the detection antibody. Range: 0.313-20 ng/mL.



Serum of eight individual healthy human donors was measured. The C1S concentration of detected samples was determined to be 610.10 ng/mL with a range of 102.92-1,188.99 ng/mL.