

TAP1 Recombinant Matched Antibody Pair, PBS Only

Catalog Number: **MP02080-1**

Capture Antibody Information

Catalog Number:
85766-1-PBS
Host:
Rabbit
Isotype:
IgG
Purification Method:
Protein A purification

Clone ID:
250037D7
Reactivity:
human
Immunogen Catalog Number:
Ag1619

Conjugate:
Unconjugated
Full name:
transporter 1, ATP-binding cassette, sub-family B (MDR/TAP)
Gene ID:
6890

Detection Antibody Information

Catalog Number:
85766-3-PBS
Host:
Rabbit
Isotype:
IgG
Purification Method:
Protein A purification

Clone ID:
250037B2
Reactivity:
human
GenBank:
BC014081
Immunogen Catalog Number:
Ag1619

Conjugate:
Unconjugated
Full name:
transporter 1, ATP-binding cassette, sub-family B (MDR/TAP)
Gene ID:
6890

Applications

Tested Applications:
Cytometric bead array, Sandwich ELISA

Range:
1.563-200 ng/mL (Cytometric Bead Array)
0.313-20 ng/mL (Sandwich ELISA)

Recommended Dilutions:
It is recommended that this reagent should be titrated in each testing system to obtain optimal results.

Product Information

MP02080-1 targets TAP1 in immunoassays as a matched antibody pair. Validated in Cytometric bead array, Sandwich ELISA.

Capture antibody: TAP1 Recombinant antibody, PBS Only (Capture) 85766-1-PBS (250037D7). 100 µg. Concentration 1 mg/mL.

Detection antibody: TAP1 Recombinant antibody, PBS Only (Capture/Detector) 85766-3-PBS (250037B2). 100 µg. Concentration 1 mg/mL.

Unconjugated rabbit recombinant monoclonal antibody pair in PBS only storage buffer at a concentration of 1 mg/mL, ready for conjugation. Created using Proteintech's proprietary in-house recombinant technology. Recombinant production enables unrivalled batch-to-batch consistency, easy scale-up, and future security of supply.

Matched antibody pairs are designed for use in a variety of assays and platforms that require matched antibody pairs.

Antibody use should be optimized for each application and assay.

Storage

Storage:
Store at -80°C.
Storage buffer:
PBS only

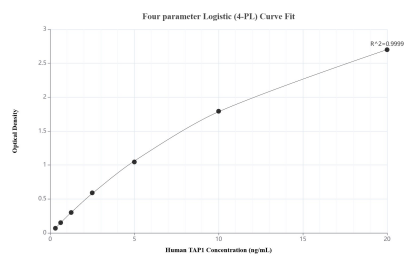
For technical support and original validation data for this product please contact:

T: 1 (888) 4PTGLAB (1-888-478-4522) (toll free in USA), or 1(312) 455-8498 (outside USA)

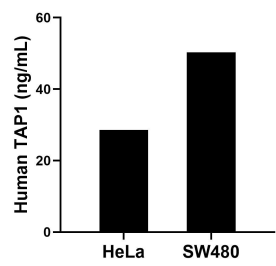
E: proteintech@ptglab.com
W: ptglab.com

This product is exclusively available under Proteintech Group brand and is not available to purchase from any other manufacturer.

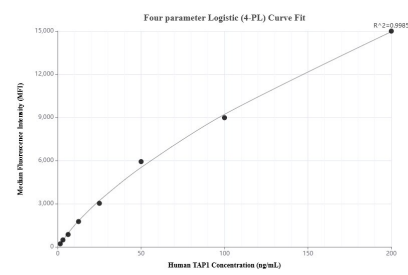
Selected Validation Data



Sandwich ELISA standard curve of MP02080-1, Human TAP1 Recombinant Matched Antibody Pair - PBS only. 85766-1-PBS was coated to a plate as the capture antibody and incubated with serial dilutions of standard Ag1619. 85766-3-PBS was HRP conjugated as the detection antibody. Range: 0.313-20 ng/mL.



The mean TAP1 concentration was determined to be 28.62 ng/mL in HeLa cell extract based on a 2.10 mg/mL extract load and 50.30 ng/mL in SW480 cell extract based on a 1.50 mg/mL extract load.



Cytometric bead array standard curve of MP02080-1, TAP1 Recombinant Matched Antibody Pair, PBS Only. Capture antibody: 85766-1-PBS. Detection antibody: 85766-3-PBS. Standard: Ag1619. Range: 1.563-200 ng/mL.