

For Research Use Only

Prolactin Recombinant Matched Antibody Pair, PBS Only



Catalog Number:MP02083-4

Capture Antibody Information

Catalog Number:
85765-7-PBS

Host:
Rabbit

Isotype:
IgG

Purification Method:
Protein A purification

Clone ID:
252191D7

Reactivity:
human

Immunogen Catalog Number:
Eg5868

Conjugate:
Unconjugated

Full name:
prolactin

Gene ID:
5617

Detection Antibody Information

Catalog Number:
85765-6-PBS

Host:
Rabbit

Isotype:
IgG

Purification Method:
Protein A purification

Clone ID:
252191F8

Reactivity:
human

GenBank:
NM_000948.5

Immunogen Catalog Number:
Eg5868

Conjugate:
Unconjugated

Full name:
prolactin

Gene ID:
5617

Applications

Tested Applications:
Sandwich ELISA

Range:
15.6-1000 pg/mL (Sandwich ELISA)

Recommended Dilutions:
It is recommended that this reagent should be titrated in each testing system to obtain optimal results.

Product Information

MP02083-4 targets Prolactin in immunoassays as a matched antibody pair. Validated in Sandwich ELISA.

Capture antibody: PRL Recombinant monoclonal antibody, PBS Only (Capture) 85765-7-PBS (252191D7). 100 µg. Concentration 1 mg/mL.

Detection antibody: PRL Recombinant monoclonal antibody, PBS Only (Detector) 85765-6-PBS (252191F8). 100 µg. Concentration 1 mg/mL.

Unconjugated rabbit recombinant monoclonal antibody pair in PBS only storage buffer at a concentration of 1 mg/mL, ready for conjugation. Created using Proteintech's proprietary in-house recombinant technology. Recombinant production enables unrivalled batch-to-batch consistency, easy scale-up, and future security of supply.

Matched antibody pairs are designed for use in a variety of assays and platforms that require matched antibody pairs.

Antibody use should be optimized for each application and assay.

Storage

Storage:
Store at -80°C.
Storage buffer:
PBS only

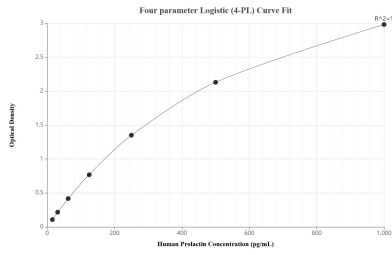
For technical support and original validation data for this product please contact:

T: 1 (888) 4PTGLAB (1-888-478-4522) (toll free in USA), or 1(312) 455-8498 (outside USA)

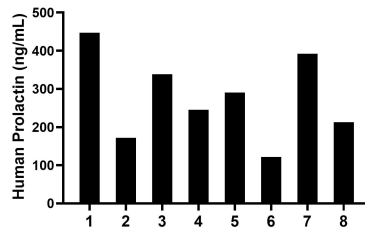
E: proteintech@ptglab.com
W: ptglab.com

This product is exclusively available under Proteintech Group brand and is not available to purchase from any other manufacturer.

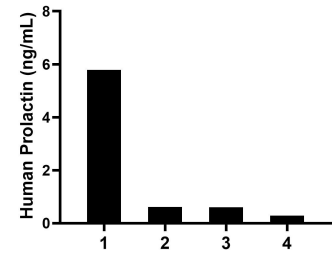
Selected Validation Data



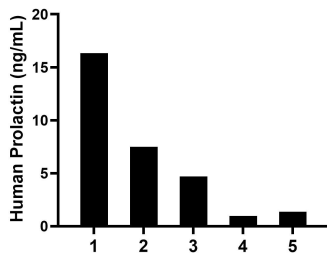
Sandwich ELISA standard curve of MP02083-4, Human Prolactin Recombinant Matched Antibody Pair - PBS only. 85765-7-PBS was coated to a plate as the capture antibody and incubated with serial dilutions of standard Eg5868. 85765-6-PBS was HRP conjugated as the detection antibody. Range: 15.6-1000 pg/mL



Serum of eight individual pregnant women donors was measured. The Prolactin concentration of detected samples was determined to be 277.5 ng/mL with a range of 121.7-447.4 ng/mL.



Plasma of four individual healthy human donors was measured. The Prolactin concentration of detected samples was determined to be 1.8 ng/mL with a range of 0.3-5.8 ng/mL.



Human milk of five individual healthy human donors was measured. The Prolactin concentration of detected samples was determined to be 6.2 ng/mL with a range of 1.0-16.3 ng/mL.