

For Research Use Only

Mouse CRTAM/CD355 Recombinant Matched Antibody Pair, PBS Only



Catalog Number:MP02101-3

Capture Antibody Information

Catalog Number:
85724-4-PBS
Host:
Rabbit
Isotype:
IgG
Purification Method:
Protein A purification

Clone ID:
250055G4
Reactivity:
mouse
Immunogen Catalog Number:
Eg2691

Conjugate:
Unconjugated
Full name:
cytotoxic and regulatory T cell molecule
Gene ID:
54698

Detection Antibody Information

Catalog Number:
85724-6-PBS
Host:
Rabbit
Isotype:
IgG
Purification Method:
Protein A purification

Clone ID:
250055C4
Reactivity:
mouse
GenBank:
NM_001281954.1
Immunogen Catalog Number:
Eg2691

Conjugate:
Unconjugated
Full name:
cytotoxic and regulatory T cell molecule
Gene ID:
54698

Applications

Tested Applications:
Sandwich ELISA

Range:
0.156-10 ng/mL (Sandwich ELISA)

Recommended Dilutions:
It is recommended that this reagent should be titrated in each testing system to obtain optimal results.

Product Information

MP02101-3 targets CRTAM/CD355 in immunoassays as a matched antibody pair. Validated in Sandwich ELISA.
Capture antibody: Mouse Crtam CD355 Recombinant antibody, PBS Only (Capture) 85724-4-PBS (250055G4). 100 µg. Concentration 1 mg/mL.
Detection antibody: Mouse Crtam CD355 Recombinant antibody, PBS Only (Detector) 85724-6-PBS (250055C4). 100 µg. Concentration 1 mg/mL.
Unconjugated rabbit recombinant monoclonal antibody pair in PBS only storage buffer at a concentration of 1 mg/mL, ready for conjugation. Created using Proteintech's proprietary in-house recombinant technology. Recombinant production enables unrivalled batch-to-batch consistency, easy scale-up, and future security of supply. Matched antibody pairs are designed for use in a variety of assays and platforms that require matched antibody pairs.
Antibody use should be optimized for each application and assay.

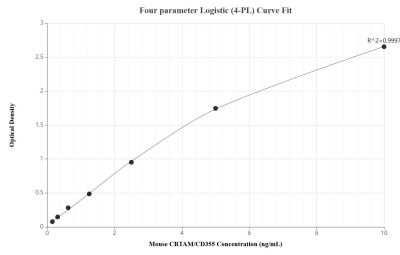
Storage

Storage:
Store at -80°C.
Storage buffer:
PBS only

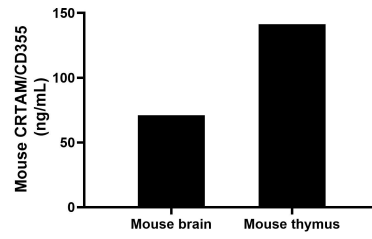
For technical support and original validation data for this product please contact:
T: 1 (888) 4PTGLAB (1-888-478-4522) (toll free in USA), or 1(312) 455-8498 (outside USA) E: proteintech@ptglab.com W: ptglab.com

This product is exclusively available under Proteintech Group brand and is not available to purchase from any other manufacturer.

Selected Validation Data



Sandwich ELISA standard curve of MP02101-3, Mouse CRTAM/CD355 Recombinant Matched Antibody Pair - PBS only. 85724-4-PBS was coated to a plate as the capture antibody and incubated with serial dilutions of standard Eg2691. 85724-6-PBS was HRP conjugated as the detection antibody. Range: 0.156-10 ng/mL



The mean CRTAM/CD355 concentration was determined to be 70.99 ng/mL in mouse brain tissue extract based on a 6.60 mg/mL extract load and 141.42 ng/mL in mouse thymus tissue extract based on a 5.80 mg/mL extract load.