

DDX18 Recombinant Matched Antibody Pair, PBS Only

Catalog Number: **MP02107-2**

Capture Antibody Information

Catalog Number:
85789-2-PBS
Host:
Rabbit
Isotype:
IgG
Purification Method:
Protein A purification

Clone ID:
250053A4
Reactivity:
human
Immunogen Catalog Number:
Ag27457

Conjugate:
Unconjugated
Full name:
DEAD (Asp-Glu-Ala-Asp) box polypeptide 18
Gene ID:
8886

Detection Antibody Information

Catalog Number:
85789-4-PBS
Host:
Rabbit
Isotype:
IgG
Purification Method:
Protein A purification

Clone ID:
250053F11
Reactivity:
human
GenBank:
BC001238
Immunogen Catalog Number:
Ag27457

Conjugate:
Unconjugated
Full name:
DEAD (Asp-Glu-Ala-Asp) box polypeptide 18
Gene ID:
8886

Applications

Tested Applications:
Sandwich ELISA

Range:
39.1-2500 pg/mL (Sandwich ELISA)

Recommended Dilutions:
It is recommended that this reagent should be titrated in each testing system to obtain optimal results.

Product Information

MP02107-2 targets DDX18 in immunoassays as a matched antibody pair. Validated in Sandwich ELISA.

Capture antibody: DDX18 Recombinant antibody, PBS Only (Capture) 85789-2-PBS (250053A4). 100 µg. Concentration 1 mg/mL.

Detection antibody: DDX18 Recombinant antibody, PBS Only (Detector) 85789-4-PBS (250053F11). 100 µg. Concentration 1 mg/mL.

Unconjugated rabbit recombinant monoclonal antibody pair in PBS only storage buffer at a concentration of 1 mg/mL, ready for conjugation. Created using Proteintech's proprietary in-house recombinant technology. Recombinant production enables unrivalled batch-to-batch consistency, easy scale-up, and future security of supply.

Matched antibody pairs are designed for use in a variety of assays and platforms that require matched antibody pairs.

Antibody use should be optimized for each application and assay.

Storage

Storage:
Store at -80°C.
Storage buffer:
PBS only

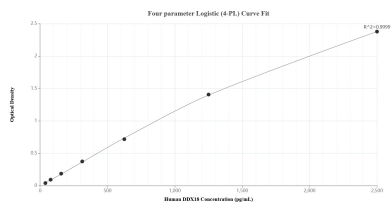
For technical support and original validation data for this product please contact:

T: 1 (888) 4PTGLAB (1-888-478-4522) (toll free in USA), or 1(312) 455-8498 (outside USA)

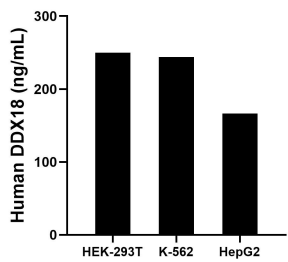
E: proteintech@ptglab.com
W: ptglab.com

This product is exclusively available under Proteintech Group brand and is not available to purchase from any other manufacturer.

Selected Validation Data



Sandwich ELISA standard curve of MP02107-2, Human DDX18 Recombinant Matched Antibody Pair - PBS only. 85789-2-PBS was coated to a plate as the capture antibody and incubated with serial dilutions of standard Ag27457. 85789-4-PBS was HRP conjugated as the detection antibody. Range: 39.1-2500 pg/mL.



The mean DDX18 concentration was determined to be 249.8 ng/mL in HEK-293T cell extract based on a 2.8 mg/mL extract load, 244.1 ng/mL in K-562 cell extract based on a 2.5 mg/mL extract load and 166.4 ng/mL in HepG2 cell extract based on a 1.8 mg/mL extract load.