

# Kallikrein 10 Recombinant Matched Antibody Pair, PBS Only

Catalog Number: **MP02112-3**

## Capture Antibody Information

**Catalog Number:**

85741-4-PBS

**Host:**

Rabbit

**Isotype:**

IgG

**Purification Method:**

Protein A purification

**Clone ID:**

242746F1

**Reactivity:**

human

**Immunogen Catalog Number:**

Eg3132

**Conjugate:**

Unconjugated

**Full name:**

kallikrein-related peptidase 10

**Gene ID:**

5655

## Detection Antibody Information

**Catalog Number:**

85741-6-PBS

**Host:**

Rabbit

**Isotype:**

IgG

**Purification Method:**

Protein A purification

**Clone ID:**

242746E2

**Reactivity:**

human

**GenBank:**

NM\_002776.4

**Immunogen Catalog Number:**

Eg3132

**Conjugate:**

Unconjugated

**Full name:**

kallikrein-related peptidase 10

**Gene ID:**

5655

## Applications

**Tested Applications:**

Sandwich ELISA

**Range:**

39.1-2500 pg/mL (Sandwich ELISA)

**Recommended Dilutions:**

It is recommended that this reagent should be titrated in each testing system to obtain optimal results.

## Product Information

MP02112-3 targets Kallikrein 10 in immunoassays as a matched antibody pair. Validated in Sandwich ELISA.

Capture antibody: KLK10 Recombinant antibody, PBS Only (Capture) 85741-4-PBS (242746F1). 100 µg. Concentration 1 mg/mL.

Detection antibody: KLK10 Recombinant antibody, PBS Only (Detector) 85741-6-PBS (242746E2). 100 µg. Concentration 1 mg/mL.

Unconjugated rabbit recombinant monoclonal antibody pair in PBS only storage buffer at a concentration of 1 mg/mL, ready for conjugation. Created using Proteintech's proprietary in-house recombinant technology. Recombinant production enables unrivalled batch-to-batch consistency, easy scale-up, and future security of supply.

Matched antibody pairs are designed for use in a variety of assays and platforms that require matched antibody pairs.

Antibody use should be optimized for each application and assay.

## Storage

**Storage:**

Store at -80°C.

**Storage buffer:**

PBS only

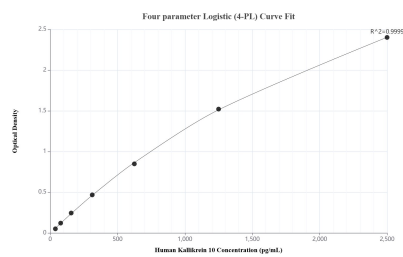
For technical support and original validation data for this product please contact:

T: 1 (888) 4PTGLAB (1-888-478-4522) (toll free in USA), or 1(312) 455-8498 (outside USA)

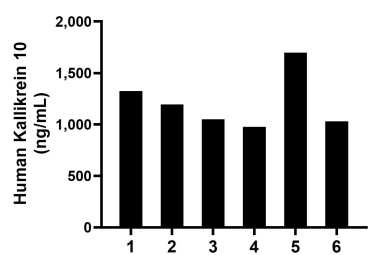
E: [proteintech@ptglab.com](mailto:proteintech@ptglab.com)  
W: [ptglab.com](http://ptglab.com)

**This product is exclusively available under Proteintech Group brand and is not available to purchase from any other manufacturer.**

## Selected Validation Data



Sandwich ELISA standard curve of MP02112-3, Human Kallikrein 10 Recombinant Matched Antibody Pair - PBS only. 85741-4-PBS was coated to a plate as the capture antibody and incubated with serial dilutions of standard Eg3132. 85741-6-PBS was HRP conjugated as the detection antibody. Range: 39.1-2500 pg/mL.



Serum of six individual healthy human donors was measured. The Kallikrein 10 concentration of detected samples was determined to be 1,212.5 pg/mL with a range of 977.3-1,697.0 pg/mL.