

For Research Use Only



# SMR3B Recombinant Matched Antibody Pair, PBS Only

Catalog Number:MP02114-1

## Capture Antibody Information

Catalog Number:  
85745-3-PBS  
Host:  
Rabbit  
Isotype:  
IgG  
Purification Method:  
Protein A purification

Clone ID:  
242868D3  
Reactivity:  
human  
Immunogen Catalog Number:  
Eg3081

Conjugate:  
Unconjugated  
Full name:  
submaxillary gland androgen regulated protein 3B  
Gene ID:  
10879

## Detection Antibody Information

Catalog Number:  
85745-2-PBS  
Host:  
Rabbit  
Isotype:  
IgG  
Purification Method:  
Protein A purification

Clone ID:  
242868C8  
Reactivity:  
human  
GenBank:  
NM\_006685.4  
Immunogen Catalog Number:  
Eg3081

Conjugate:  
Unconjugated  
Full name:  
submaxillary gland androgen regulated protein 3B  
Gene ID:  
10879

## Applications

Tested Applications:  
Cytometric bead array, Sandwich ELISA

Range:  
0.313-40 ng/mL (Cytometric Bead Array)  
0.156-10 ng/mL (Sandwich ELISA)

Recommended Dilutions:  
It is recommended that this reagent should be titrated in each testing system to obtain optimal results.

## Product Information

MP02114-1 targets SMR3B in immunoassays as a matched antibody pair. Validated in Cytometric bead array, Sandwich ELISA.

Capture antibody: SMR3B Recombinant antibody, PBS Only (Capture) 85745-3-PBS (242868D3). 100 µg. Concentration 1 mg/mL.

Detection antibody: SMR3B Recombinant antibody, PBS Only (Capture/Detector) 85745-2-PBS (242868C8). 100 µg. Concentration 1 mg/mL.

Unconjugated rabbit recombinant monoclonal antibody pair in PBS only storage buffer at a concentration of 1 mg/mL, ready for conjugation. Created using Proteintech's proprietary in-house recombinant technology. Recombinant production enables unrivalled batch-to-batch consistency, easy scale-up, and future security of supply.

Matched antibody pairs are designed for use in a variety of assays and platforms that require matched antibody pairs.

Antibody use should be optimized for each application and assay.

## Storage

Storage:  
Store at -80°C.  
Storage buffer:  
PBS only

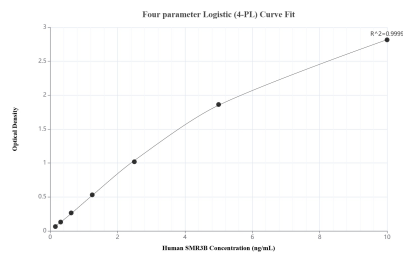
For technical support and original validation data for this product please contact:

T: 1 (888) 4PTGLAB (1-888-478-4522) (toll free in USA), or 1(312) 455-8498 (outside USA)

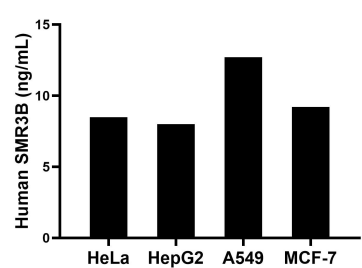
E: [proteintech@ptglab.com](mailto:proteintech@ptglab.com)  
W: [ptglab.com](http://ptglab.com)

This product is exclusively available under Proteintech Group brand and is not available to purchase from any other manufacturer.

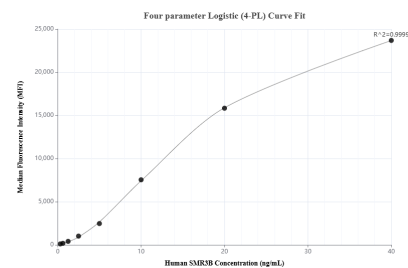
## Selected Validation Data



Sandwich ELISA standard curve of MP02114-1, Human SMR3B Recombinant Matched Antibody Pair - PBS only. 85745-3-PBS was coated to a plate as the capture antibody and incubated with serial dilutions of standard Eg3081. 85745-2-PBS was HRP conjugated as the detection antibody. Range: 0.156-10 ng/mL.



The mean SMR3B concentration was determined to be 8.50 ng/mL in HeLa cell extract based on a 1.30 mg/mL extract load, 8.00 ng/mL in HepG2 cell extract based on a 0.90 mg/mL extract load, 12.70 ng/mL in A549 cell extract based on a 2.40 mg/mL extract load and 9.20 ng/mL in MCF-7 cell extract based on a 1.20 mg/mL extract load.



Cytometric bead array standard curve of MP02114-1, SMR3B Recombinant Matched Antibody Pair, PBS Only. Capture antibody: 85745-3-PBS. Detection antibody: 85745-2-PBS. Standard: Eg3081. Range: 0.313-40 ng/mL.