

DCC Recombinant Matched Antibody Pair, PBS Only

Catalog Number: **MP02122-3**

Capture Antibody Information

Catalog Number:

85787-4-PBS

Host:

Rabbit

Isotype:

IgG

Purification Method:

Protein A purification

Clone ID:

250085A11

Reactivity:

human

Immunogen Catalog Number:

Eg2937

Conjugate:

Unconjugated

Full name:

deleted in colorectal carcinoma

Gene ID:

1630

Detection Antibody Information

Catalog Number:

85787-2-PBS

Host:

Rabbit

Isotype:

IgG

Purification Method:

Protein A purification

Clone ID:

250085G2

Reactivity:

human

GenBank:

NM_005215.3

Immunogen Catalog Number:

Eg2937

Conjugate:

Unconjugated

Full name:

deleted in colorectal carcinoma

Gene ID:

1630

Applications

Tested Applications:

Sandwich ELISA

Range:

0.313-20 ng/mL (Sandwich ELISA)

Recommended Dilutions:

It is recommended that this reagent should be titrated in each testing system to obtain optimal results.

Product Information

MP02122-3 targets DCC in immunoassays as a matched antibody pair. Validated in Sandwich ELISA.

Capture antibody: DCC Recombinant antibody, PBS Only (Capture) 85787-4-PBS (250085A11). 100 µg. Concentration 1 mg/mL.

Detection antibody: DCC Recombinant antibody, PBS Only (Capture/Detector) 85787-2-PBS (250085G2). 100 µg. Concentration 1 mg/mL.

Unconjugated rabbit recombinant monoclonal antibody pair in PBS only storage buffer at a concentration of 1 mg/mL, ready for conjugation. Created using Proteintech's proprietary in-house recombinant technology. Recombinant production enables unrivalled batch-to-batch consistency, easy scale-up, and future security of supply.

Matched antibody pairs are designed for use in a variety of assays and platforms that require matched antibody pairs.

Antibody use should be optimized for each application and assay.

Storage

Storage:

Store at -80°C.

Storage buffer:

PBS only

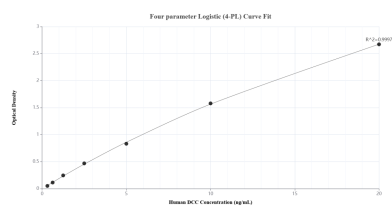
For technical support and original validation data for this product please contact:

T: 1 (888) 4PTGLAB (1-888-478-4522) (toll free in USA), or 1(312) 455-8498 (outside USA)

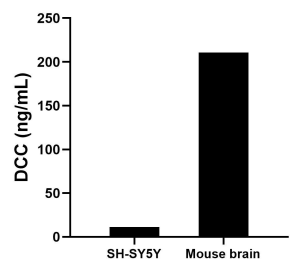
E: proteintech@ptglab.com
W: ptglab.com

This product is exclusively available under Proteintech Group brand and is not available to purchase from any other manufacturer.

Selected Validation Data



Sandwich ELISA standard curve of MP02122-3, Human DCC Recombinant Matched Antibody Pair - PBS only. 85787-4-PBS was coated to a plate as the capture antibody and incubated with serial dilutions of standard Eg2937. 85787-2-PBS was HRP conjugated as the detection antibody. Range: 0.313-20 ng/mL



The mean DCC concentration was determined to be 11.21 ng/mL in SH-SY5Y cell extract based on a 1.00 mg/mL extract load and 210.63 ng/mL in mouse brain tissue extract based on a 6.60 mg/mL extract load.