

For Research Use Only



MEF2D Recombinant Matched Antibody Pair, PBS Only

Catalog Number:MP02136-3

Capture Antibody Information

Catalog Number:

85801-3-PBS

Host:

Rabbit

Isotype:

IgG

Purification Method:

Protein A purification

Clone ID:

250068H2

Reactivity:

human

Immunogen Catalog Number:

Ag5700

Conjugate:

Unconjugated

Full name:

myocyte enhancer factor 2D

Gene ID:

4209

Detection Antibody Information

Catalog Number:

85801-1-PBS

Host:

Rabbit

Isotype:

IgG

Purification Method:

Protein A purification

Clone ID:

250068A6

Reactivity:

human

GenBank:

BC040949

Immunogen Catalog Number:

Ag5700

Conjugate:

Unconjugated

Full name:

myocyte enhancer factor 2D

Gene ID:

4209

Applications

Tested Applications:

Sandwich ELISA

Range:

0.313-20 ng/mL (Sandwich ELISA)

Recommended Dilutions:

It is recommended that this reagent should be titrated in each testing system to obtain optimal results.

Product Information

MP02136-3 targets MEF2D in immunoassays as a matched antibody pair. Validated in Sandwich ELISA.

Capture antibody: MEF2D Recombinant antibody, PBS Only (Capture) 85801-3-PBS (250068H2). 100 µg. Concentration 1 mg/mL.

Detection antibody: MEF2D Recombinant antibody, PBS Only (Capture/Detector) 85801-1-PBS (250068A6). 100 µg. Concentration 1 mg/mL.

Unconjugated rabbit recombinant monoclonal antibody pair in PBS only storage buffer at a concentration of 1 mg/mL, ready for conjugation. Created using Proteintech's proprietary in-house recombinant technology. Recombinant production enables unrivalled batch-to-batch consistency, easy scale-up, and future security of supply.

Matched antibody pairs are designed for use in a variety of assays and platforms that require matched antibody pairs.

Antibody use should be optimized for each application and assay.

Storage

Storage:

Store at -80°C.

Storage buffer:

PBS only

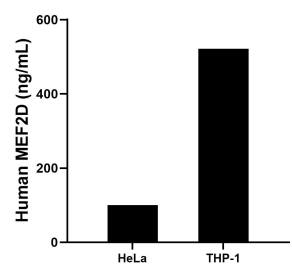
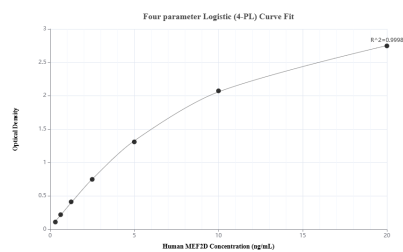
For technical support and original validation data for this product please contact:

T: 1 (888) 4PTGLAB (1-888-478-4522) (toll free in USA), or 1(312) 455-8498 (outside USA)

E: proteintech@ptglab.com
W: ptglab.com

This product is exclusively available under Proteintech Group brand and is not available to purchase from any other manufacturer.

Selected Validation Data



Sandwich ELISA standard curve of MP02136-3, Human MEF2D Recombinant Matched Antibody Pair - PBS only. 85801-3-PBS was coated to a plate as the capture antibody and incubated with serial dilutions of standard Ag5700. 85801-1-PBS was HRP conjugated as the detection antibody. Range: 0.313-20 ng/mL

The mean MEF2D concentration was determined to be 100.38 ng/mL in HeLa cell extract based on a 1.5 mg/mL extract load and 521.78 ng/mL in THP-1 cell extract based on a 1.5 mg/mL extract load.