

# LIFR Recombinant Matched Antibody Pair, PBS Only

Catalog Number: **MP02139-4**

## Capture Antibody Information

**Catalog Number:**  
85827-4-PBS  
**Host:**  
Rabbit  
**Isotype:**  
IgG  
**Purification Method:**  
Protein A purification

**Clone ID:**  
250110F2  
**Reactivity:**  
human  
**Immunogen Catalog Number:**  
Eg2599

**Conjugate:**  
Unconjugated  
**Full name:**  
leukemia inhibitory factor receptor alpha  
**Gene ID:**  
3977

## Detection Antibody Information

**Catalog Number:**  
85827-2-PBS  
**Host:**  
Rabbit  
**Isotype:**  
IgG  
**Purification Method:**  
Protein A purification

**Clone ID:**  
250110B11  
**Reactivity:**  
human  
**GenBank:**  
NM\_001127671.1  
**Immunogen Catalog Number:**  
Eg2599

**Conjugate:**  
Unconjugated  
**Full name:**  
leukemia inhibitory factor receptor alpha  
**Gene ID:**  
3977

## Applications

**Tested Applications:**  
Sandwich ELISA

**Range:**  
1.56-50 ng/mL (Sandwich ELISA)

**Recommended Dilutions:**  
It is recommended that this reagent should be titrated in each testing system to obtain optimal results.

## Product Information

MP02139-4 targets LIFR in immunoassays as a matched antibody pair. Validated in Sandwich ELISA.

Capture antibody: LIFR Recombinant monoclonal antibody, PBS Only (Capture) 85827-4-PBS (250110F2). 100 µg. Concentration 1 mg/mL.

Detection antibody: LIFR Recombinant monoclonal antibody, PBS Only (Detector) 85827-2-PBS (250110B11). 100 µg. Concentration 1 mg/mL.

Unconjugated rabbit recombinant monoclonal antibody pair in PBS only storage buffer at a concentration of 1 mg/mL, ready for conjugation. Created using Proteintech's proprietary in-house recombinant technology. Recombinant production enables unrivalled batch-to-batch consistency, easy scale-up, and future security of supply.

Matched antibody pairs are designed for use in a variety of assays and platforms that require matched antibody pairs.

Antibody use should be optimized for each application and assay.

## Storage

**Storage:**  
Store at -80°C.  
**Storage buffer:**  
PBS only

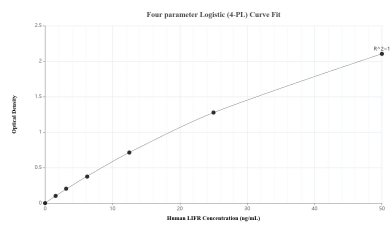
For technical support and original validation data for this product please contact:

T: 1 (888) 4PTGLAB (1-888-478-4522) (toll free in USA), or 1(312) 455-8498 (outside USA)

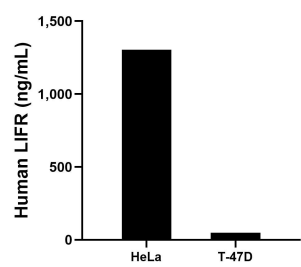
E: [proteintech@ptglab.com](mailto:proteintech@ptglab.com)  
W: [ptglab.com](http://ptglab.com)

**This product is exclusively available under Proteintech Group brand and is not available to purchase from any other manufacturer.**

## Selected Validation Data



Sandwich ELISA standard curve of MP02139-4, Human LIFR Recombinant Matched Antibody Pair - PBS only. 85827-4-PBS was coated to a plate as the capture antibody and incubated with serial dilutions of standard Eg2599. 85827-2-PBS was HRP conjugated as the detection antibody. Range: 1.56-50 ng/mL.



The mean LIFR concentration was determined to be 1,303.54 ng/mL in HeLa cell extract based on a 1.20 mg/mL extract load and 48.76 ng/mL in T-47D cell extract based on a 1.20 mg/mL extract load.