

Mouse Esm1 Recombinant Matched Antibody Pair, PBS Only

Catalog Number: **MP02164-1**

Capture Antibody Information

Catalog Number:

85814-3-PBS

Host:

Rabbit

Isotype:

IgG

Purification Method:

Protein A purification

Clone ID:

242968H1

Reactivity:

mouse

Immunogen Catalog Number:

Eg2784

Conjugate:

Unconjugated

Full name:

endothelial cell-specific molecule 1

Gene ID:

71690

Detection Antibody Information

Catalog Number:

85814-2-PBS

Host:

Rabbit

Isotype:

IgG

Purification Method:

Protein A purification

Clone ID:

242968A5

Reactivity:

mouse

GenBank:

NM_023612.3

Immunogen Catalog Number:

Eg2784

Conjugate:

Unconjugated

Full name:

endothelial cell-specific molecule 1

Gene ID:

71690

Applications

Tested Applications:

Cytometric bead array, Sandwich ELISA

Range:

0.781-50 ng/mL (Cytometric Bead Array)
31.25-2000 pg/mL (Sandwich ELISA)

Recommended Dilutions:

It is recommended that this reagent should be titrated in each testing system to obtain optimal results.

Product Information

MP02164-1 targets Esm1 in immunoassays as a matched antibody pair. Validated in Cytometric bead array, Sandwich ELISA.

Capture antibody: Mouse Esm1 Recombinant antibody, PBS Only (Capture) 85814-3-PBS (242968H1). 100 µg. Concentration 1 mg/mL.

Detection antibody: Mouse Esm1 Recombinant antibody, PBS Only (Capture/Detector) 85814-2-PBS (242968A5). 100 µg. Concentration 1 mg/mL.

Unconjugated rabbit recombinant monoclonal antibody pair in PBS only storage buffer at a concentration of 1 mg/mL, ready for conjugation. Created using Proteintech's proprietary in-house recombinant technology. Recombinant production enables unrivalled batch-to-batch consistency, easy scale-up, and future security of supply.

Matched antibody pairs are designed for use in a variety of assays and platforms that require matched antibody pairs.

Antibody use should be optimized for each application and assay.

Storage

Storage:

Store at -80°C.

Storage buffer:

PBS only

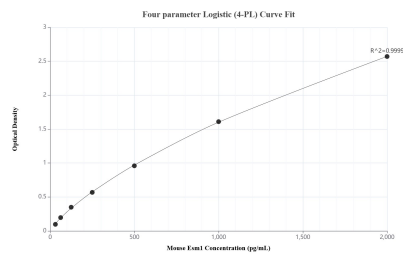
For technical support and original validation data for this product please contact:

T: 1 (888) 4PTGLAB (1-888-478-4522) (toll free in USA), or 1(312) 455-8498 (outside USA)

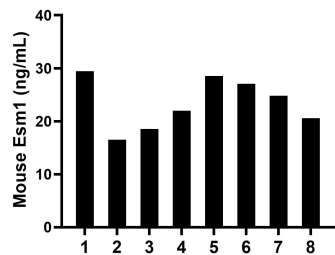
E: proteintech@ptglab.com
W: ptglab.com

This product is exclusively available under Proteintech Group brand and is not available to purchase from any other manufacturer.

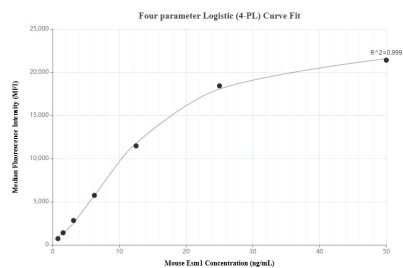
Selected Validation Data



Sandwich ELISA standard curve of MP02164-1, Mouse Esm1 Recombinant Matched Antibody Pair - PBS only. 85814-3-PBS was coated to a plate as the capture antibody and incubated with serial dilutions of standard Eg2784. 85814-2-PBS was HRP conjugated as the detection antibody. Range: 31.25-2000 pg/mL



Serum of eight mice was measured. The Esm1 concentration of detected samples was determined to be 23.4 ng/mL with a range of 16.5-29.5 ng/mL.



Cytometric bead array standard curve of MP02164-1, MOUSE Esm1 Recombinant Matched Antibody Pair, PBS Only. Capture antibody: 85814-3-PBS. Detection antibody: 85814-2-PBS. Standard: Eg2784. Range: 0.781-50 ng/mL