

Mouse CCL19/MIP-3 beta Recombinant Matched Antibody Pair, PBS Only

Catalog Number: **MP02165-1**

Capture Antibody Information

Catalog Number:
85861-3-PBS

Host:
Rabbit

Isotype:
IgG

Purification Method:
Protein A purification

Clone ID:
242867E7

Reactivity:
mouse

Immunogen Catalog Number:
Eg3124

Conjugate:
Unconjugated

Full name:
chemokine (C-C motif) ligand 19

Gene ID:
24047

Detection Antibody Information

Catalog Number:
85861-1-PBS

Host:
Rabbit

Isotype:
IgG

Purification Method:
Protein A purification

Clone ID:
242867C1

Reactivity:
mouse

GenBank:
NM_011888.2

Immunogen Catalog Number:
Eg3124

Conjugate:
Unconjugated

Full name:
chemokine (C-C motif) ligand 19

Gene ID:
24047

Applications

Tested Applications:
Cytometric bead array, Sandwich
ELISA

Range:
0.781-100 ng/mL (Cytometric Bead
Array)
12.5-800 pg/mL (Sandwich ELISA)

Recommended Dilutions:
It is recommended that this reagent
should be titrated in each testing
system to obtain optimal results.

Product Information

MP02165-1 targets CCL19/MIP-3 beta in immunoassays as a matched antibody pair. Validated in Cytometric bead array, Sandwich ELISA.

Capture antibody: Mouse Ccl19 Recombinant antibody, PBS Only (Capture) 85861-3-PBS (242867E7). 100 µg. Concentration 1 mg/mL.

Detection antibody: Mouse Ccl19 Recombinant antibody, PBS Only (Detector) 85861-1-PBS (242867C1). 100 µg. Concentration 1 mg/mL.

Unconjugated rabbit recombinant monoclonal antibody pair in PBS only storage buffer at a concentration of 1 mg/mL, ready for conjugation. Created using Proteintech's proprietary in-house recombinant technology. Recombinant production enables unrivalled batch-to-batch consistency, easy scale-up, and future security of supply.

Matched antibody pairs are designed for use in a variety of assays and platforms that require matched antibody pairs.

Antibody use should be optimized for each application and assay.

Storage

Storage:
Store at -80°C.

Storage buffer:
PBS only

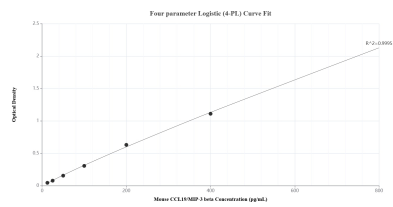
For technical support and original validation data for this product please contact:

T: 1 (888) 4PTGLAB (1-888-478-4522) (toll free
in USA), or 1(312) 455-8498 (outside USA)

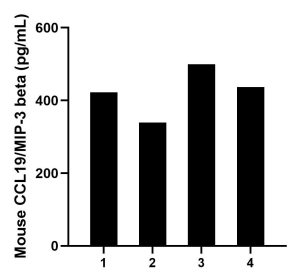
E: proteintech@ptglab.com
W: ptglab.com

This product is exclusively available under Proteintech Group brand and is not available to purchase from any other manufacturer.

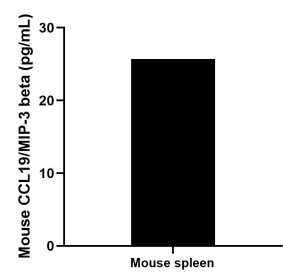
Selected Validation Data



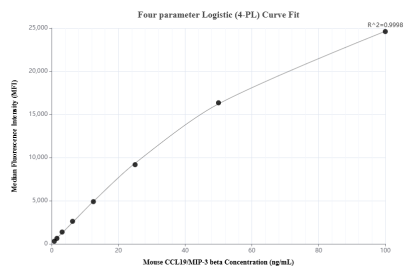
Sandwich ELISA standard curve of MP02165-1, Mouse CCL19/MIP-3 beta Recombinant Matched Antibody Pair - PBS only. 85861-3-PBS was coated to a plate as the capture antibody and incubated with serial dilutions of standard Eg3124. 85861-1-PBS was HRP conjugated as the detection antibody. Range: 12.5-800 pg/mL



Serum of four mice was measured. The CCL19/MIP-3 beta concentration of detected samples was determined to be 424.5 pg/mL with a range of 338.8-499.6 pg/mL.



Mouse spleen tissue was removed, rinsed in 1x PBS, and kept on ice. The tissue was then homogenized using a tissue homogenizer and seeded into media containing RPMI 1640 supplemented with 10% fetal bovine serum, 2 mM L-glutamine, 100 U/mL penicillin, and 100 mg/mL streptomycin sulfate. Cells were cultured for 3 days. Aliquots of the cell culture supernatants were removed and assayed for levels of mouse CCL19/MIP-3 beta, and measured 25.7 pg/mL.



Cytometric bead array standard curve of MP02165-1, MOUSE CCL19/MIP-3 beta Recombinant Matched Antibody Pair, PBS Only. Capture antibody: 85861-3-PBS. Detection antibody: 85861-1-PBS. Standard: Eg3124. Range: 0.781-100 ng/mL