

# Parvalbumin Recombinant Matched Antibody Pair, PBS Only

Catalog Number: **MP02167-1**

## Capture Antibody Information

**Catalog Number:**

85819-3-PBS

**Host:**

Rabbit

**Isotype:**

IgG

**Purification Method:**

Protein A purification

**Clone ID:**

250158A11

**Reactivity:**

human

**Immunogen Catalog Number:**

Ag30189

**Conjugate:**

Unconjugated

**Full name:**

parvalbumin

**Gene ID:**

5816

## Detection Antibody Information

**Catalog Number:**

85819-2-PBS

**Host:**

Rabbit

**Isotype:**

IgG

**Purification Method:**

Protein A purification

**Clone ID:**

250158B10

**Reactivity:**

human

**GenBank:**

NM\_002854

**Immunogen Catalog Number:**

Ag30189

**Conjugate:**

Unconjugated

**Full name:**

parvalbumin

**Gene ID:**

5816

## Applications

**Tested Applications:**

Cytometric bead array, Sandwich ELISA

**Range:**0.781-25 ng/mL (Cytometric Bead Array)  
31.25-2000 pg/mL (Sandwich ELISA)**Recommended Dilutions:**

It is recommended that this reagent should be titrated in each testing system to obtain optimal results.

## Product Information

MP02167-1 targets Parvalbumin in immunoassays as a matched antibody pair. Validated in Cytometric bead array, Sandwich ELISA.

Capture antibody: PVALB Recombinant antibody, PBS Only (Capture) 85819-3-PBS (250158A11). 100 µg. Concentration 1 mg/mL.

Detection antibody: PVALB Recombinant antibody, PBS Only (Detector) 85819-2-PBS (250158B10). 100 µg. Concentration 1 mg/mL.

Unconjugated rabbit recombinant monoclonal antibody pair in PBS only storage buffer at a concentration of 1 mg/mL, ready for conjugation. Created using Proteintech's proprietary in-house recombinant technology. Recombinant production enables unrivalled batch-to-batch consistency, easy scale-up, and future security of supply.

Matched antibody pairs are designed for use in a variety of assays and platforms that require matched antibody pairs.

Antibody use should be optimized for each application and assay.

## Storage

**Storage:**

Store at -80°C.

**Storage buffer:**

PBS only

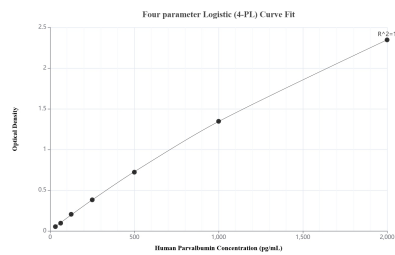
For technical support and original validation data for this product please contact:

T: 1 (888) 4PTGLAB (1-888-478-4522) (toll free in USA), or 1(312) 455-8498 (outside USA)

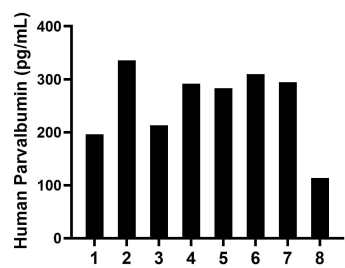
E: [proteintech@ptglab.com](mailto:proteintech@ptglab.com)  
W: [ptglab.com](http://ptglab.com)

This product is exclusively available under Proteintech Group brand and is not available to purchase from any other manufacturer.

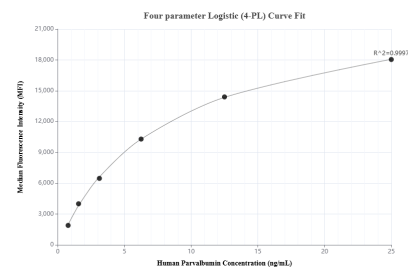
## Selected Validation Data



Sandwich ELISA standard curve of MP02167-1, Human Parvalbumin Recombinant Matched Antibody Pair - PBS only. 85819-3-PBS was coated to a plate as the capture antibody and incubated with serial dilutions of standard Ag30189. 85819-2-PBS was HRP conjugated as the detection antibody. Range: 31.25-2000 pg/mL.



Serum of eight individual healthy human donors was measured. The Parvalbumin concentration of detected samples was determined to be 254.8 pg/mL with a range of 113.7-335.8 pg/mL.



Cytometric bead array standard curve of MP02167-1, Parvalbumin Recombinant Matched Antibody Pair, PBS Only. Capture antibody: 85819-3-PBS. Detection antibody: 85819-2-PBS. Standard: Ag30189. Range: 0.781-25 ng/mL.