

For Research Use Only



Rat Beta-2-Microglobulin Recombinant Matched Antibody Pair, PBS Only

Catalog Number:MP02168-3

Capture Antibody Information

Catalog Number:

85816-2-PBS

Host:

Rabbit

Isotype:

IgG

Purification Method:

Protein A purification

Clone ID:

250092E1

Reactivity:

rat

Immunogen Catalog Number:

Eg3270

Conjugate:

Unconjugated

Full name:

beta-2 microglobulin

Gene ID:

24223

Detection Antibody Information

Catalog Number:

85816-3-PBS

Host:

Rabbit

Isotype:

IgG

Purification Method:

Protein A purification

Clone ID:

250092C5

Reactivity:

rat

GenBank:

NM_012512.2

Immunogen Catalog Number:

Eg3270

Conjugate:

Unconjugated

Full name:

beta-2 microglobulin

Gene ID:

24223

Applications

Tested Applications:

Sandwich ELISA

Range:

31.3-2000 pg/mL (Sandwich ELISA)

Recommended Dilutions:

It is recommended that this reagent should be titrated in each testing system to obtain optimal results.

Product Information

MP02168-3 targets Beta-2-Microglobulin in immunoassays as a matched antibody pair. Validated in Sandwich ELISA.

Capture antibody: Rat Beta-2 microglobulin Recombinant monoclonal antibody, PBS Only (Capture) 85816-2-PBS (250092E1). 100 µg. Concentration 1 mg/ml.

Detection antibody: Rat Beta-2 microglobulin Recombinant monoclonal antibody, PBS Only (Detector) 85816-3-PBS (250092C5). 100 µg. Concentration 1 mg/ml.

Unconjugated rabbit recombinant monoclonal antibody pair in PBS only storage buffer at a concentration of 1 mg/mL, ready for conjugation. Created using Proteintech's proprietary in-house recombinant technology. Recombinant production enables unrivalled batch-to-batch consistency, easy scale-up, and future security of supply.

Matched antibody pairs are designed for use in a variety of assays and platforms that require matched antibody pairs.

Antibody use should be optimized for each application and assay.

Storage

Storage:

Store at -80°C.

Storage buffer:

PBS only

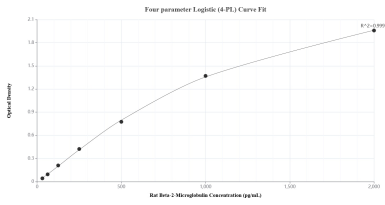
For technical support and original validation data for this product please contact:

T: 1 (888) 4PTGLAB (1-888-478-4522) (toll free
in USA), or 1(312) 455-8498 (outside USA)

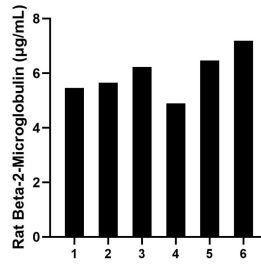
E: proteintech@ptglab.com
W: ptglab.com

This product is exclusively available under Proteintech Group brand and is not available to purchase from any other manufacturer.

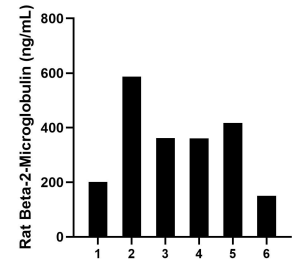
Selected Validation Data



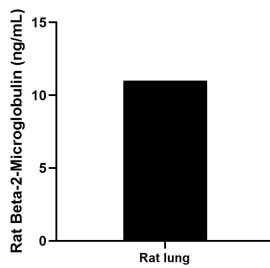
Sandwich ELISA standard curve of MP02168-3, Rat Beta-2-Microglobulin Recombinant Matched Antibody Pair - PBS only. 85816-2-PBS was coated to a plate as the capture antibody and incubated with serial dilutions of standard Eg3270. 85816-3-PBS was HRP conjugated as the detection antibody. Range: 31.3-2000 pg/mL



Serum of six rats was measured. The Beta-2-Microglobulin concentration of detected samples was determined to be 6.0 µg/mL with a range of 4.9-7.2 µg/mL.



Urine of six rats was measured. The Beta-2-Microglobulin concentration of detected samples was determined to be 346.3 ng/mL with a range of 149.9-587.3 ng/mL.



Rat lungs were rinsed with enough PBS to cover the organs and kept on ice. Tissue was homogenized with a tissue homogenizer and cultured in RPMI 1640 supplemented with 10% fetal bovine serum, 2 mM L-glutamine, 100 U/mL penicillin, and 100 mg/mL streptomycin sulfate. Aliquots of the cell culture supernatants were removed and assayed for Beta-2-Microglobulin, and measured 11.0 ng/mL.