

# PAEP/Glycodelin Recombinant Matched Antibody Pair, PBS Only

Catalog Number: **MP02170-3**

## Capture Antibody Information

**Catalog Number:**  
85856-5-PBS  
**Host:**  
Rabbit  
**Isotype:**  
IgG  
**Purification Method:**  
Protein A purification

**Clone ID:**  
250206B5  
**Reactivity:**  
human  
**Immunogen Catalog Number:**  
Eg3037

**Conjugate:**  
Unconjugated  
**Full name:**  
progesterone-associated endometrial  
protein  
**Gene ID:**  
5047

## Detection Antibody Information

**Catalog Number:**  
85856-4-PBS  
**Host:**  
Rabbit  
**Isotype:**  
IgG  
**Purification Method:**  
Protein A purification

**Clone ID:**  
250206F3  
**Reactivity:**  
human  
**GenBank:**  
NM\_002571.4  
**Immunogen Catalog Number:**  
Eg3037

**Conjugate:**  
Unconjugated  
**Full name:**  
progesterone-associated endometrial  
protein  
**Gene ID:**  
5047

## Applications

**Tested Applications:**  
Sandwich ELISA

**Range:**  
125-8000 pg/mL (Sandwich ELISA)

**Recommended Dilutions:**  
It is recommended that this reagent  
should be titrated in each testing  
system to obtain optimal results.

## Product Information

MP02170-3 targets PAEP/Glycodelin in immunoassays as a matched antibody pair. Validated in Sandwich ELISA.

Capture antibody: PAEP Recombinant antibody, PBS Only (Capture) 85856-5-PBS (250206B5). 100 µg. Concentration 1 mg/mL.

Detection antibody: PAEP Recombinant antibody, PBS Only (Detector) 85856-4-PBS (250206F3). 100 µg. Concentration 1 mg/mL.

Unconjugated rabbit recombinant monoclonal antibody pair in PBS only storage buffer at a concentration of 1 mg/mL, ready for conjugation. Created using Proteintech's proprietary in-house recombinant technology. Recombinant production enables unrivalled batch-to-batch consistency, easy scale-up, and future security of supply.

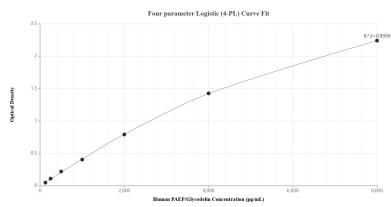
Matched antibody pairs are designed for use in a variety of assays and platforms that require matched antibody pairs.

Antibody use should be optimized for each application and assay.

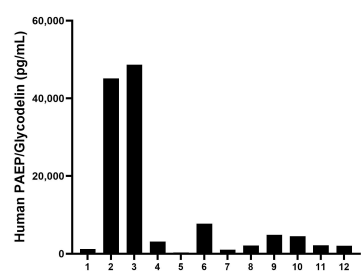
## Storage

**Storage:**  
Store at -80°C.  
**Storage buffer:**  
PBS only

## Selected Validation Data



Sandwich ELISA standard curve of MP02170-3, Human PAEP/Glycodelin Recombinant Matched Antibody Pair - PBS only. 85856-5-PBS was coated to a plate as the capture antibody and incubated with serial dilutions of standard Eg3037. 85856-4-PBS was HRP conjugated as the detection antibody. Range: 125-8000 pg/mL



Serum of twelve individual healthy human donors was measured. The PAEP/Glycodelin concentration of detected samples was determined to be 10,251.8 pg/mL with a range of 330.7-48,667.8 pg/mL