

For Research Use Only

LGALS3BP Recombinant Matched Antibody Pair, PBS Only



Catalog Number:MP02172-3

Capture Antibody Information

Catalog Number:
85883-7-PBS
Host:
Rabbit
Isotype:
IgG
Purification Method:
Protein A purification

Clone ID:
250138C12
Reactivity:
human
Immunogen Catalog Number:
Eg3302

Conjugate:
Unconjugated
Full name:
lectin, galactoside-binding, soluble, 3 binding protein
Gene ID:
3959

Detection Antibody Information

Catalog Number:
85883-6-PBS
Host:
Rabbit
Isotype:
IgG
Purification Method:
Protein A purification

Clone ID:
250138A7
Reactivity:
human
GenBank:
NM_005567
Immunogen Catalog Number:
Eg3302

Conjugate:
Unconjugated
Full name:
lectin, galactoside-binding, soluble, 3 binding protein
Gene ID:
3959

Applications

Tested Applications:
Sandwich ELISA

Range:
0.156-10 ng/mL (Sandwich ELISA)

Recommended Dilutions:
It is recommended that this reagent should be titrated in each testing system to obtain optimal results.

Product Information

MP02172-3 targets LGALS3BP in immunoassays as a matched antibody pair. Validated in Sandwich ELISA.

Capture antibody: LGALS3BP Recombinant antibody, PBS Only (Capture) 85883-7-PBS (250138C12). 100 µg. Concentration 1 mg/mL.

Detection antibody: LGALS3BP Recombinant antibody, PBS Only (Detector) 85883-6-PBS (250138A7). 100 µg. Concentration 1 mg/mL.

Unconjugated rabbit recombinant monoclonal antibody pair in PBS only storage buffer at a concentration of 1 mg/mL, ready for conjugation. Created using Proteintech's proprietary in-house recombinant technology. Recombinant production enables unrivalled batch-to-batch consistency, easy scale-up, and future security of supply.

Matched antibody pairs are designed for use in a variety of assays and platforms that require matched antibody pairs.

Antibody use should be optimized for each application and assay.

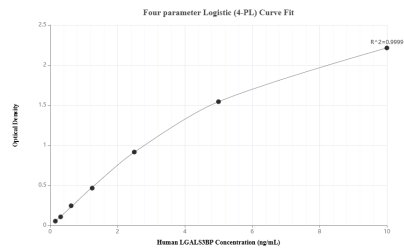
Storage

Storage:
Store at -80°C.
Storage buffer:
PBS only

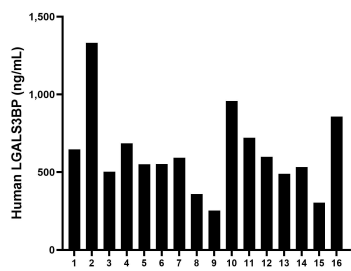
For technical support and original validation data for this product please contact:
T: 1 (888) 4PTGLAB (1-888-478-4522) (toll free in USA), or 1(312) 455-8498 (outside USA)
E: proteintech@ptglab.com
W: ptglab.com

This product is exclusively available under Proteintech Group brand and is not available to purchase from any other manufacturer.

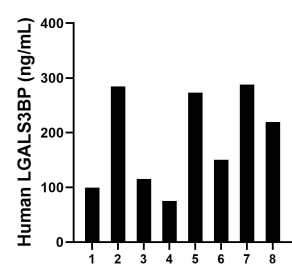
Selected Validation Data



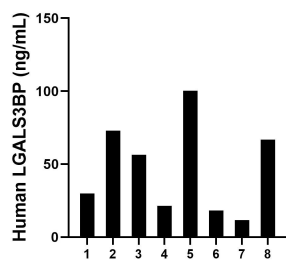
Sandwich ELISA standard curve of MP02172-3, HumanLGALS3BP Recombinant Matched Antibody Pair - PBS only. 85883-7-PBS was coated to a plate as the capture antibody and incubated with serial dilutions of standard Eg3302. 85883-6-PBS was HRP conjugated as the detection antibody. Range: 0.156-10 ng/mL



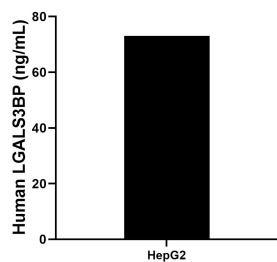
Serum of sixteen individual healthy human donors was measured. The human LGALS3BP concentration of detected samples was determined to be 620.97 ng/mL with a range of 252.78 - 1,331.49 ng/mL



Sliva of eight individual healthy human donors was measured. The human LGALS3BP concentration of detected samples was determined to be 188.02 ng/mL with a range of 74.95 - 287.71 ng/mL



Urine of eight individual healthy human donors was measured. The human LGALS3BP concentration of detected samples was determined to be 47.18 ng/mL with a range of 11.64 - 100.32 ng/mL



HepG2 (human hepatocellular carcinoma cells) were cultured in DMEM supplemented with 10% fetal bovine serum, 2.5 mM L-glutamine, 100 U/mL penicillin, and 100 µg/mL streptomycin sulfate. An aliquot of the cell culture supernatants was removed, assayed for human LGALS3BP, and measured 73.08 ng/mL