

# Mouse Beta-2-Microglobulin Recombinant Matched Antibody Pair, PBS Only

Catalog Number: **MP02174-3**

## Capture Antibody Information

**Catalog Number:**

98442-2-PBS

**Host:**

Rabbit

**Isotype:**

IgG

**Purification Method:**

Protein A purification

**Clone ID:**

250172F11

**Reactivity:**

mouse

**Immunogen Catalog Number:**

Eg3086

**Conjugate:**

Unconjugated

**Full name:**

beta-2 microglobulin

**Gene ID:**

12010

## Detection Antibody Information

**Catalog Number:**

85871-5-PBS

**Host:**

Rabbit

**Isotype:**

IgG

**Purification Method:**

Protein A purification

**Clone ID:**

250172D4

**Reactivity:**

mouse

**GenBank:**

NM\_009735.3

**Immunogen Catalog Number:**

Eg3086

**Conjugate:**

Unconjugated

**Full name:**

beta-2 microglobulin

**Gene ID:**

12010

## Applications

**Tested Applications:**

Sandwich ELISA

**Range:**

23.4-1500 pg/mL (Sandwich ELISA)

**Recommended Dilutions:**

It is recommended that this reagent should be titrated in each testing system to obtain optimal results.

## Product Information

MP02174-3 targets Beta-2-Microglobulin in immunoassays as a matched antibody pair. Validated in Sandwich ELISA.

Capture antibody: Anti-Mouse B2m Rabbit Recombinant Antibody, PBS Only (Capture) 98442-2-PBS (250172F11). 100 µg. Concentration 1 mg/mL.

Detection antibody: Mouse B2m Recombinant antibody, PBS Only (Detector) 85871-5-PBS (250172D4). 100 µg. Concentration 1 mg/mL.

Unconjugated rabbit recombinant monoclonal antibody pair in PBS only storage buffer at a concentration of 1 mg/mL, ready for conjugation. Created using Proteintech's proprietary in-house recombinant technology. Recombinant production enables unrivalled batch-to-batch consistency, easy scale-up, and future security of supply.

Matched antibody pairs are designed for use in a variety of assays and platforms that require matched antibody pairs.

Antibody use should be optimized for each application and assay.

## Storage

**Storage:**

Store at -80°C.

**Storage buffer:**

PBS only

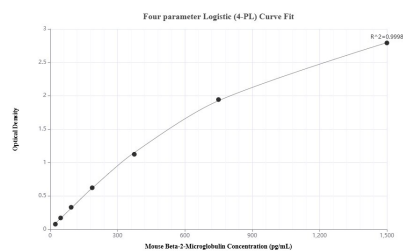
For technical support and original validation data for this product please contact:

T: 1 (888) 4PTGLAB (1-888-478-4522) (toll free  
in USA), or 1(312) 455-8498 (outside USA)

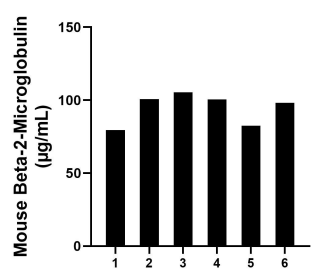
E: [proteintech@ptglab.com](mailto:proteintech@ptglab.com)  
W: [ptglab.com](http://ptglab.com)

This product is exclusively available under Proteintech Group brand and is not available to purchase from any other manufacturer.

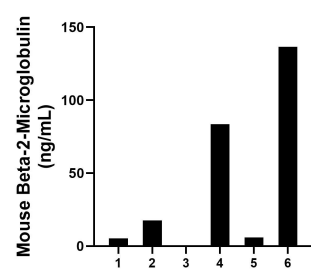
## Selected Validation Data



Sandwich ELISA standard curve of MP02174-3, Mouse Beta-2-Microglobulin Recombinant Matched Antibody Pair - PBS only. 98442-2-PBS was coated to a plate as the capture antibody and incubated with serial dilutions of standard Eg3086. 85871-5-PBS was HRP conjugated as the detection antibody. Range: 23.438-1500 pg/mL



Serum of six mice was measured. The mouse Beta-2-Microglobulin concentration of detected samples was determined to be 94.41 µg/mL with a range of 79.57 - 105.38 µg/mL.



Urine of six mice was measured. The mouse Beta-2-Microglobulin concentration of detected samples was determined to be 49.78 ng/mL with a range of ND - 136.66 ng/mL.