

CPLX1 Recombinant Matched Antibody Pair, PBS Only

Catalog Number: **MP02175-1**

Capture Antibody Information

Catalog Number:

85874-4-PBS

Host:

Rabbit

Isotype:

IgG

Purification Method:

Protein A purification

Clone ID:

250131C12

Reactivity:

human

Immunogen Catalog Number:

Ag0387

Conjugate:

Unconjugated

Full name:

complexin 1

Gene ID:

10815

Detection Antibody Information

Catalog Number:

85874-3-PBS

Host:

Rabbit

Isotype:

IgG

Purification Method:

Protein A purification

Clone ID:

250131B11

Reactivity:

human

GenBank:

BC002471

Immunogen Catalog Number:

Ag0387

Conjugate:

Unconjugated

Full name:

complexin 1

Gene ID:

10815

Applications

Tested Applications:

Cytometric bead array, Sandwich ELISA

Range:

3.125-200 ng/mL (Cytometric Bead Array)
0.313-20 ng/mL (Sandwich ELISA)

Recommended Dilutions:

It is recommended that this reagent should be titrated in each testing system to obtain optimal results.

Product Information

MP02175-1 targets CPLX1 in immunoassays as a matched antibody pair. Validated in Cytometric bead array, Sandwich ELISA.

Capture antibody: CPLX1 Recombinant antibody, PBS Only (Capture) 85874-4-PBS (250131C12). 100 µg. Concentration 1 mg/mL.

Detection antibody: CPLX1 Recombinant antibody, PBS Only (Detector) 85874-3-PBS (250131B11). 100 µg. Concentration 1 mg/mL.

Unconjugated rabbit recombinant monoclonal antibody pair in PBS only storage buffer at a concentration of 1 mg/mL, ready for conjugation. Created using Proteintech's proprietary in-house recombinant technology. Recombinant production enables unrivalled batch-to-batch consistency, easy scale-up, and future security of supply.

Matched antibody pairs are designed for use in a variety of assays and platforms that require matched antibody pairs.

Antibody use should be optimized for each application and assay.

Storage

Storage:

Store at -80°C.

Storage buffer:

PBS only

For technical support and original validation data for this product please contact:

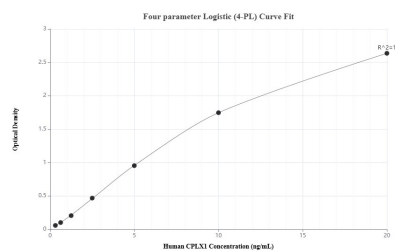
T: 1 (888) 4PTGLAB (1-888-478-4522) (toll free in USA), or 1(312) 455-8498 (outside USA)

E: proteintech@ptglab.com

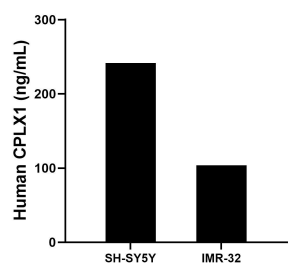
W: ptglab.com

This product is exclusively available under Proteintech Group brand and is not available to purchase from any other manufacturer.

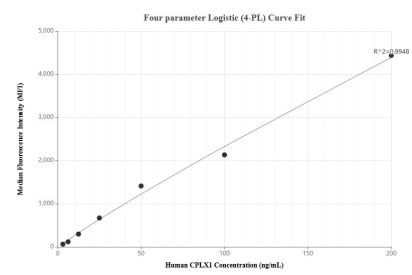
Selected Validation Data



Sandwich ELISA standard curve of MP02175-1, Human CPLX1 Recombinant Matched Antibody Pair - PBS only. 85874-4-PBS was coated to a plate as the capture antibody and incubated with serial dilutions of standard Ag0387. 85874-3-PBS was HRP conjugated as the detection antibody. Range: 0.313-20 ng/mL



The mean CPLX1 concentration was determined to be 241.51 ng/mL in SH-SY5Y cell extract based on a 3.2 mg/mL extract load and 103.92 ng/mL in IMR-32 cell extract based on a 1.7 mg/mL extract load.



Cytometric bead array standard curve of MP02175-1, CPLX1 Recombinant Matched Antibody Pair, PBS Only. Capture antibody: 85874-4-PBS. Detection antibody: 85874-3-PBS. Standard: Ag0387. Range: 3.125-200 ng/mL