

Mouse Timp2 Recombinant Matched Antibody Pair, PBS Only

Catalog Number: **MP02176-3**

Capture Antibody Information

Catalog Number:
85882-4-PBS
Host:
Rabbit
Isotype:
IgG
Purification Method:
Protein A purification

Clone ID:
250231D5
Reactivity:
mouse
Immunogen Catalog Number:
Eg2960

Conjugate:
Unconjugated
Full name:
tissue inhibitor of metalloproteinase 2
Gene ID:
21858

Detection Antibody Information

Catalog Number:
85882-2-PBS
Host:
Rabbit
Isotype:
IgG
Purification Method:
Protein A purification

Clone ID:
250231B8
Reactivity:
mouse
GenBank:
uniprot NM
Immunogen Catalog Number:
Eg2960

Conjugate:
Unconjugated
Full name:
tissue inhibitor of metalloproteinase 2
Gene ID:
21858

Applications

Tested Applications:
Sandwich ELISA

Range:
78.1-5000 pg/mL (Sandwich ELISA)

Recommended Dilutions:
It is recommended that this reagent should be titrated in each testing system to obtain optimal results.

Product Information

MP02176-3 targets Timp2 in immunoassays as a matched antibody pair. Validated in Sandwich ELISA.

Capture antibody: Mouse Timp2 Recombinant antibody, PBS Only (Capture) 85882-4-PBS (250231D5). 100 µg. Concentration 1 mg/mL.

Detection antibody: Mouse Timp2 Recombinant antibody, PBS Only (Capture/Detector) 85882-2-PBS (250231B8). 100 µg. Concentration 1 mg/mL.

Unconjugated rabbit recombinant monoclonal antibody pair in PBS only storage buffer at a concentration of 1 mg/mL, ready for conjugation. Created using Proteintech's proprietary in-house recombinant technology. Recombinant production enables unrivalled batch-to-batch consistency, easy scale-up, and future security of supply.

Matched antibody pairs are designed for use in a variety of assays and platforms that require matched antibody pairs.

Antibody use should be optimized for each application and assay.

Storage

Storage:
Store at -80°C.
Storage buffer:
PBS only

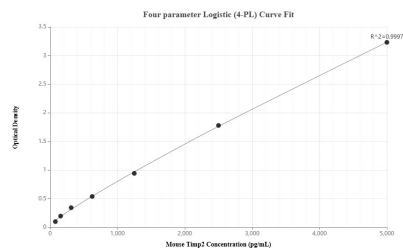
For technical support and original validation data for this product please contact:

T: 1 (888) 4PTGLAB (1-888-478-4522) (toll free in USA), or 1(312) 455-8498 (outside USA)

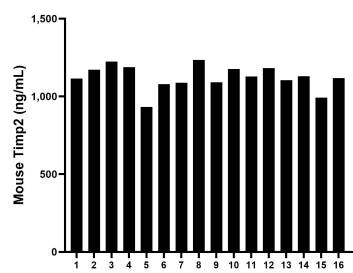
E: proteintech@ptglab.com
W: ptglab.com

This product is exclusively available under Proteintech Group brand and is not available to purchase from any other manufacturer.

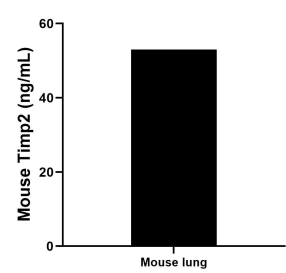
Selected Validation Data



Sandwich ELISA standard curve of MP02176-3, Mouse Timp2 Recombinant Matched Antibody Pair - PBS only. 85882-4-PBS was coated to a plate as the capture antibody and incubated with serial dilutions of standard Eg2960. 85882-2-PBS was HRP conjugated as the detection antibody. Range: 78.1-5000 pg/mL



Serum of sixteen mice was measured. The mouse Timp2 concentration of detected samples was determined to be 1,122.15 ng/mL with a range of 933.30 - 1,234.19 ng/mL



Mouse lung tissue (3 lungs in 1-2 mm pieces in 100 mL of medium) was cultured for 5 days in RPMI supplemented with 10% fetal bovine serum, 5 μ M β -mercaptoethanol, 2 mM L-glutamine, 100 U/mL penicillin, and 100 μ g/mL streptomycin sulfate. An aliquot of the cell culture supernate was removed, assayed for mouse Timp2, and measured 53.04 ng/mL