

RBBP6 Recombinant Matched Antibody Pair, PBS Only

Catalog Number: **MP02182-2**

Capture Antibody Information

Catalog Number:
85884-2-PBS
Host:
Rabbit
Isotype:
IgG
Purification Method:
Protein A purification

Clone ID:
250142D12
Reactivity:
human
Immunogen Catalog Number:
Ag2484

Conjugate:
Unconjugated
Full name:
retinoblastoma binding protein 6
Gene ID:
5930

Detection Antibody Information

Catalog Number:
85884-1-PBS
Host:
Rabbit
Isotype:
IgG
Purification Method:
Protein A purification

Clone ID:
250142B11
Reactivity:
human
GenBank:
BC029352
Immunogen Catalog Number:
Ag2484

Conjugate:
Unconjugated
Full name:
retinoblastoma binding protein 6
Gene ID:
5930

Applications

Tested Applications:
Cytometric bead array, Sandwich ELISA

Range:
0.625-80 ng/mL (Cytometric Bead Array)
0.156-10 ng/mL (Sandwich ELISA)

Recommended Dilutions:
It is recommended that this reagent should be titrated in each testing system to obtain optimal results.

Product Information

MP02182-2 targets RBBP6 in immunoassays as a matched antibody pair. Validated in Cytometric bead array, Sandwich ELISA.

Capture antibody: RBBP6 Recombinant antibody, PBS Only (Capture) 85884-2-PBS (250142D12). 100 µg. Concentration 1 mg/mL.

Detection antibody: RBBP6 Recombinant antibody, PBS Only (Detector) 85884-1-PBS (250142B11). 100 µg. Concentration 1 mg/mL.

Unconjugated rabbit recombinant monoclonal antibody pair in PBS only storage buffer at a concentration of 1 mg/mL, ready for conjugation. Created using Proteintech's proprietary in-house recombinant technology. Recombinant production enables unrivalled batch-to-batch consistency, easy scale-up, and future security of supply.

Matched antibody pairs are designed for use in a variety of assays and platforms that require matched antibody pairs.

Antibody use should be optimized for each application and assay.

Storage

Storage:
Store at -80°C.
Storage buffer:
PBS only

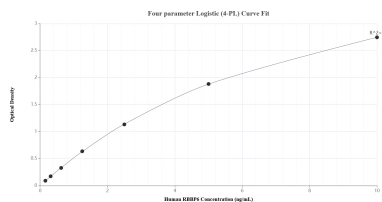
For technical support and original validation data for this product please contact:

T: 1 (888) 4PTGLAB (1-888-478-4522) (toll free in USA), or 1(312) 455-8498 (outside USA)

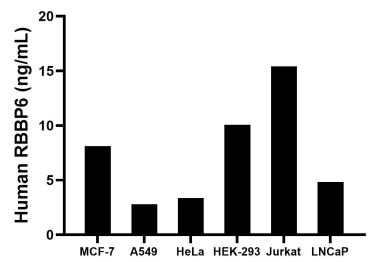
E: proteintech@ptglab.com
W: ptglab.com

This product is exclusively available under Proteintech Group brand and is not available to purchase from any other manufacturer.

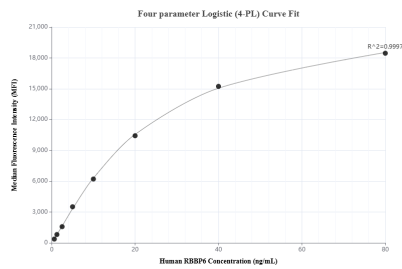
Selected Validation Data



Sandwich ELISA standard curve of MP02182-2, Human RBBP6 Recombinant Matched Antibody Pair - PBS only. 85884-2-PBS was coated to a plate as the capture antibody and incubated with serial dilutions of standard Ag2484. 85884-1-PBS was HRP conjugated as the detection antibody. Range: 0.156-10 ng/mL



The mean RBBP6 concentration was determined to be 8.11 ng/mL in MCF-7 cell extract based on a 2.40 mg/mL extract load, 2.79 ng/mL in A549 cell extract based on a 2.40 mg/mL extract load, 3.36 ng/mL in HeLa cell extract based on a 0.90 mg/mL extract load, 10.06 ng/mL in HEK-293 cell extract based on a 2.90 mg/mL extract load, 15.41 ng/mL in Jurkat cell extract based on a 2.20 mg/mL extract load and 4.84 ng/mL in LNCaP cell extract based on a 1.20 mg/mL extract



Cytometric bead array standard curve of MP02182-2, RBBP6 Recombinant Matched Antibody Pair, PBS Only. Capture antibody: 85884-2-PBS. Detection antibody: 85884-1-PBS. Standard: Ag2484. Range: 0.625-80 ng/mL