

PTPN2 Recombinant Matched Antibody Pair, PBS Only

Catalog Number: **MP02187-2**

Capture Antibody Information

Catalog Number:
85915-2-PBS
Host:
Rabbit
Isotype:
IgG
Purification Method:
Protein A purification

Clone ID:
250281F7
Reactivity:
human
Immunogen Catalog Number:
Ag1709

Conjugate:
Unconjugated
Full name:
protein tyrosine phosphatase, non-receptor type 2
Gene ID:
5771

Detection Antibody Information

Catalog Number:
85915-1-PBS
Host:
Rabbit
Isotype:
IgG
Purification Method:
Protein A purification

Clone ID:
250281G2
Reactivity:
human
GenBank:
BC016727
Immunogen Catalog Number:
Ag1709

Conjugate:
Unconjugated
Full name:
protein tyrosine phosphatase, non-receptor type 2
Gene ID:
5771

Applications

Tested Applications:
Cytometric bead array, Sandwich ELISA

Range:
0.938-120 ng/mL (Cytometric Bead Array)
1.56-100 ng/mL (Sandwich ELISA)

Recommended Dilutions:
It is recommended that this reagent should be titrated in each testing system to obtain optimal results.

Product Information

MP02187-2 targets PTPN2 in immunoassays as a matched antibody pair. Validated in Cytometric bead array, Sandwich ELISA.

Capture antibody: PTPN2 Recombinant antibody, PBS Only (Capture/Detector) 85915-2-PBS (250281F7). 100 µg. Concentration 1 mg/mL.

Detection antibody: PTPN2 Recombinant antibody, PBS Only (Detector) 85915-1-PBS (250281G2). 100 µg. Concentration 1 mg/mL.

Unconjugated rabbit recombinant monoclonal antibody pair in PBS only storage buffer at a concentration of 1 mg/mL, ready for conjugation. Created using Proteintech's proprietary in-house recombinant technology. Recombinant production enables unrivalled batch-to-batch consistency, easy scale-up, and future security of supply.

Matched antibody pairs are designed for use in a variety of assays and platforms that require matched antibody pairs.

Antibody use should be optimized for each application and assay.

Storage

Storage:
Store at -80°C.
Storage buffer:
PBS only

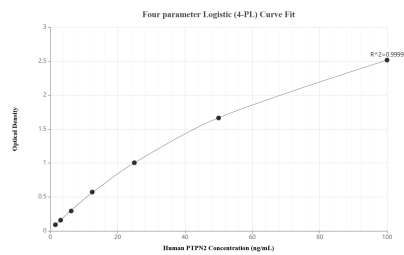
For technical support and original validation data for this product please contact:

T: 1 (888) 4PTGLAB (1-888-478-4522) (toll free in USA), or 1(312) 455-8498 (outside USA)

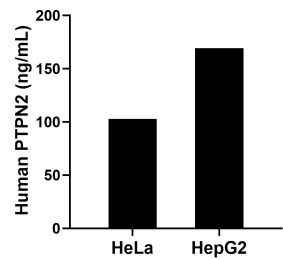
E: proteintech@ptglab.com
W: ptglab.com

This product is exclusively available under Proteintech Group brand and is not available to purchase from any other manufacturer.

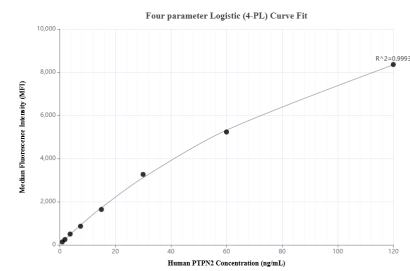
Selected Validation Data



Sandwich ELISA standard curve of MP02187-2, Human PTPN2 Recombinant Matched Antibody Pair - PBS only. 85915-2-PBS was coated to a plate as the capture antibody and incubated with serial dilutions of standard Ag1709. 85915-1-PBS was HRP conjugated as the detection antibody. Range: 1.56-100 ng/mL



The mean PTPN2 concentration was determined to be 102.95 ng/mL in HeLa cell extract based on a 1.30 mg/mL extract load and 169.33 ng/mL in HepG2 cell extract based on a 0.90 mg/mL extract load.



Cytometric bead array standard curve of MP02187-2, PTPN2 Recombinant Matched Antibody Pair, PBS Only. Capture antibody: 85915-2-PBS. Detection antibody: 85915-1-PBS. Standard: Ag1709. Range: 0.938-120 ng/mL