

For Research Use Only



Mouse ATP1B1 Recombinant Matched Antibody Pair, PBS Only

Catalog Number:MP02193-3

Capture Antibody Information

Catalog Number:
85916-2-PBS
Host:
Rabbit
Isotype:
IgG
Purification Method:
Protein A purification

Clone ID:
243093E4
Reactivity:
mouse
Immunogen Catalog Number:
Eg3007

Conjugate:
Unconjugated
Full name:
ATPase, Na⁺/K⁺ transporting, beta 1 polypeptide
Gene ID:
11931

Detection Antibody Information

Catalog Number:
85916-1-PBS
Host:
Rabbit
Isotype:
IgG
Purification Method:
Protein A purification

Clone ID:
243093E3
Reactivity:
mouse
GenBank:
NM_009721.6
Immunogen Catalog Number:
Eg3007

Conjugate:
Unconjugated
Full name:
ATPase, Na⁺/K⁺ transporting, beta 1 polypeptide
Gene ID:
11931

Applications

Tested Applications:
Sandwich ELISA

Range:
46.9-3000 pg/mL (Sandwich ELISA)

Recommended Dilutions:
It is recommended that this reagent should be titrated in each testing system to obtain optimal results.

Product Information

MP02193-3 targets ATP1B1 in immunoassays as a matched antibody pair. Validated in Sandwich ELISA.

Capture antibody: Mouse ATP1B1 Recombinant antibody, PBS Only (Capture/Detector) 85916-2-PBS (243093E4). 100 µg. Concentration 1 mg/mL.

Detection antibody: Mouse ATP1B1 Recombinant antibody, PBS Only (Capture/Detector) 85916-1-PBS (243093E3). 100 µg. Concentration 1 mg/mL.

Unconjugated rabbit recombinant monoclonal antibody pair in PBS only storage buffer at a concentration of 1 mg/mL, ready for conjugation. Created using Proteintech's proprietary in-house recombinant technology. Recombinant production enables unrivalled batch-to-batch consistency, easy scale-up, and future security of supply.

Matched antibody pairs are designed for use in a variety of assays and platforms that require matched antibody pairs.

Antibody use should be optimized for each application and assay.

Storage

Storage:
Store at -80°C.
Storage buffer:
PBS only

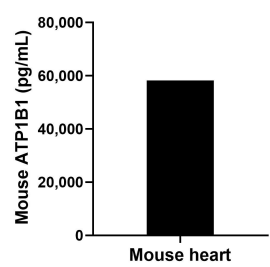
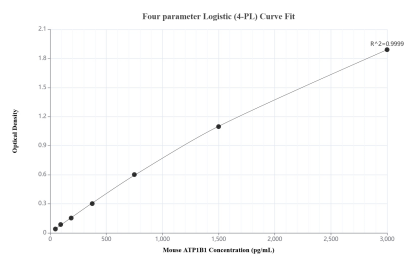
For technical support and original validation data for this product please contact:

T: 1 (888) 4PTGLAB (1-888-478-4522) (toll free in USA), or 1(312) 455-8498 (outside USA)

E: proteintech@ptglab.com
W: ptglab.com

This product is exclusively available under Proteintech Group brand and is not available to purchase from any other manufacturer.

Selected Validation Data



Sandwich ELISA standard curve of MP02193-3, Mouse ATP1B1 Recombinant Matched Antibody Pair - PBS only. 85916-2-PBS was coated to a plate as the capture antibody and incubated with serial dilutions of standard Eg3007. 85916-1-PBS was HRP conjugated as the detection antibody. Range: 46.9-3000 pg/mL

The mean ATP1B1 concentration was determined to be 58,169.6 pg/mL in mouse heart extract based on a 6.9 mg/mL extract load.