

# PTPN1/PTP1B Recombinant Matched Antibody Pair, PBS Only

Catalog Number: **MP02199-1**

## Capture Antibody Information

**Catalog Number:**  
85905-1-PBS  
**Host:**  
Rabbit  
**Isotype:**  
IgG  
**Purification Method:**  
Protein A purification

**Clone ID:**  
250215H4  
**Reactivity:**  
human  
**Immunogen Catalog Number:**  
Ag1878

**Conjugate:**  
Unconjugated  
**Full name:**  
protein tyrosine phosphatase, non-receptor type 1  
**Gene ID:**  
5770

## Detection Antibody Information

**Catalog Number:**  
85905-2-PBS  
**Host:**  
Rabbit  
**Isotype:**  
IgG  
**Purification Method:**  
Protein A purification

**Clone ID:**  
250215E9  
**Reactivity:**  
human  
**GenBank:**  
BC015660  
**Immunogen Catalog Number:**  
Ag1878

**Conjugate:**  
Unconjugated  
**Full name:**  
protein tyrosine phosphatase, non-receptor type 1  
**Gene ID:**  
5770

## Applications

**Tested Applications:**  
Cytometric bead array

**Range:**  
0.781-100 ng/mL (Cytometric Bead Array)

**Recommended Dilutions:**  
It is recommended that this reagent should be titrated in each testing system to obtain optimal results.

## Product Information

MP02199-1 targets PTPN1/PTP1B in immunoassays as a matched antibody pair. Validated in Cytometric bead array.

Capture antibody: PTPN1 Recombinant antibody, PBS Only (Capture) 85905-1-PBS (250215H4). 100 µg. Concentration 1 mg/mL.

Detection antibody: PTPN1 Recombinant antibody, PBS Only (Detector) 85905-2-PBS (250215E9). 100 µg. Concentration 1 mg/mL.

Unconjugated rabbit recombinant monoclonal antibody pair in PBS only storage buffer at a concentration of 1 mg/mL, ready for conjugation. Created using Proteintech's proprietary in-house recombinant technology. Recombinant production enables unrivalled batch-to-batch consistency, easy scale-up, and future security of supply.

Matched antibody pairs are designed for use in a variety of assays and platforms that require matched antibody pairs.

Antibody use should be optimized for each application and assay.

## Storage

**Storage:**  
Store at -80°C.  
**Storage buffer:**  
PBS only

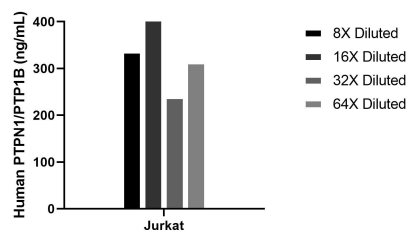
For technical support and original validation data for this product please contact:

T: 1 (888) 4PTGLAB (1-888-478-4522) (toll free in USA), or 1(312) 455-8498 (outside USA)

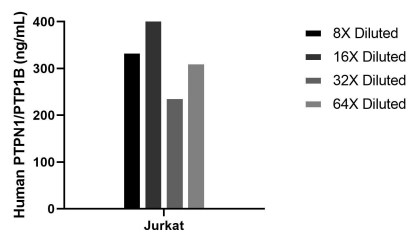
E: [proteintech@ptglab.com](mailto:proteintech@ptglab.com)  
W: [ptglab.com](http://ptglab.com)

**This product is exclusively available under Proteintech Group brand and is not available to purchase from any other manufacturer.**

## Selected Validation Data



The mean PTPN1/PTP1B concentration was determined to be 330.3 ng/mL in Jurkat cell extract based on a 1.9 mg/mL extract load.



Cytometric bead array standard curve of MP02199-1, PTPN1/PTP1B Recombinant Matched Antibody Pair, PBS Only. Capture antibody: 85905-1-PBS. Detection antibody: 85905-2-PBS. Standard: Ag1878. Range: 0.781-100 ng/mL.