

# SPARCL1 Recombinant Matched Antibody Pair, PBS Only

Catalog Number: **MP02200-1**

## Capture Antibody Information

**Catalog Number:**

85906-3-PBS

**Host:**

Rabbit

**Isotype:**

IgG

**Purification Method:**

Protein A purification

**Clone ID:**

250331D2

**Reactivity:**

human

**Immunogen Catalog Number:**

Eg2837

**Conjugate:**

Unconjugated

**Full name:**

SPARC-like 1 (hevin)

**Gene ID:**

8404

## Detection Antibody Information

**Catalog Number:**

85906-2-PBS

**Host:**

Rabbit

**Isotype:**

IgG

**Purification Method:**

Protein A purification

**Clone ID:**

250331B4

**Reactivity:**

human

**GenBank:**

NM\_004684.5

**Immunogen Catalog Number:**

Eg2837

**Conjugate:**

Unconjugated

**Full name:**

SPARC-like 1 (hevin)

**Gene ID:**

8404

## Applications

**Tested Applications:**

Cytometric bead array, Sandwich ELISA

**Range:**0.781-100 ng/mL (Cytometric Bead Array)  
0.156-10 ng/mL (Sandwich ELISA)**Recommended Dilutions:**

It is recommended that this reagent should be titrated in each testing system to obtain optimal results.

## Product Information

MP02200-1 targets SPARCL1 in immunoassays as a matched antibody pair. Validated in Cytometric bead array, Sandwich ELISA.

Capture antibody: SPARCL1 Recombinant antibody, PBS Only (Capture) 85906-3-PBS (250331D2). 100 µg. Concentration 1 mg/mL.

Detection antibody: SPARCL1 Recombinant antibody, PBS Only (Detector) 85906-2-PBS (250331B4). 100 µg. Concentration 1 mg/mL.

Unconjugated rabbit recombinant monoclonal antibody pair in PBS only storage buffer at a concentration of 1 mg/mL, ready for conjugation. Created using Proteintech's proprietary in-house recombinant technology. Recombinant production enables unrivalled batch-to-batch consistency, easy scale-up, and future security of supply.

Matched antibody pairs are designed for use in a variety of assays and platforms that require matched antibody pairs.

Antibody use should be optimized for each application and assay.

## Storage

**Storage:**

Store at -80°C.

**Storage buffer:**

PBS only

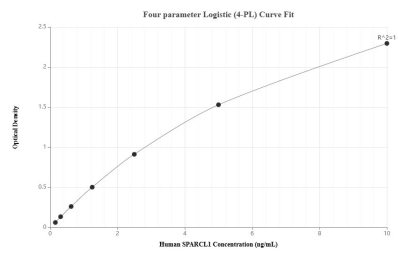
For technical support and original validation data for this product please contact:

T: 1 (888) 4PTGLAB (1-888-478-4522) (toll free in USA), or 1(312) 455-8498 (outside USA)

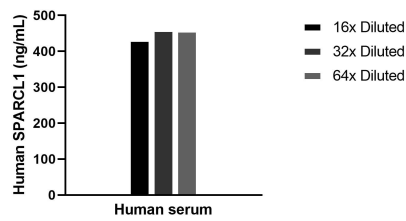
E: [proteintech@ptglab.com](mailto:proteintech@ptglab.com)  
W: [ptglab.com](http://ptglab.com)

This product is exclusively available under Proteintech Group brand and is not available to purchase from any other manufacturer.

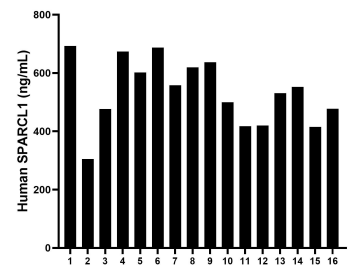
## Selected Validation Data



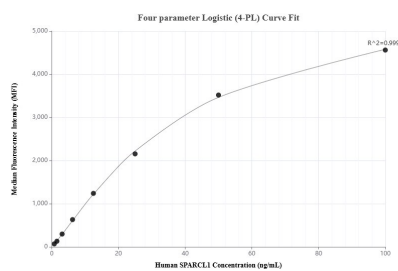
Sandwich ELISA standard curve of MP02200-1, Human SPARCL1 Recombinant Matched Antibody Pair - PBS only. 85906-3-PBS was coated to a plate as the capture antibody and incubated with serial dilutions of standard Eg2837. 85906-2-PBS was HRP conjugated as the detection antibody. Range: 0.156-10 ng/mL



The mean SPARCL1 concentration was determined to be 448.7 ng/mL in Human serum.



Serum of sixteen individual healthy human donors was measured. The human SPARCL1 concentration of detected samples was determined to be 535.16 ng/mL with a range of 304.76 - 693.17 ng/mL



Cytometric bead array standard curve of MP02200-1, SPARCL1 Recombinant Matched Antibody Pair, PBS Only. Capture antibody: 85906-3-PBS. Detection antibody: 85906-2-PBS. Standard: Eg2837. Range: 0.781-100 ng/mL