

SPARCL1 Recombinant Matched Antibody Pair, PBS Only

Catalog Number: **MP02200-2**

Capture Antibody Information

Catalog Number:

85906-3-PBS

Host:

Rabbit

Isotype:

IgG

Purification Method:

Protein A purification

Clone ID:

250331D2

Reactivity:

human

Immunogen Catalog Number:

Eg2837

Conjugate:

Unconjugated

Full name:

SPARC-like 1 (hevin)

Gene ID:

8404

Detection Antibody Information

Catalog Number:

85906-1-PBS

Host:

Rabbit

Isotype:

IgG

Purification Method:

Protein A purification

Clone ID:

250331F2

Reactivity:

human

GenBank:

NM_004684.5

Immunogen Catalog Number:

Eg2837

Conjugate:

Unconjugated

Full name:

SPARC-like 1 (hevin)

Gene ID:

8404

Applications

Tested Applications:

Cytometric bead array

Range:

0.781-100 ng/mL (Cytometric Bead Array)

Recommended Dilutions:

It is recommended that this reagent should be titrated in each testing system to obtain optimal results.

Product Information

MP02200-2 targets SPARCL1 in immunoassays as a matched antibody pair. Validated in Cytometric bead array.

Capture antibody: SPARCL1 Recombinant antibody, PBS Only (Capture) 85906-3-PBS (250331D2). 100 µg. Concentration 1 mg/mL.

Detection antibody: SPARCL1 Recombinant antibody, PBS Only (Detector) 85906-1-PBS (250331F2). 100 µg. Concentration 1 mg/mL.

Unconjugated rabbit recombinant monoclonal antibody pair in PBS only storage buffer at a concentration of 1 mg/mL, ready for conjugation. Created using Proteintech's proprietary in-house recombinant technology. Recombinant production enables unrivalled batch-to-batch consistency, easy scale-up, and future security of supply.

Matched antibody pairs are designed for use in a variety of assays and platforms that require matched antibody pairs.

Antibody use should be optimized for each application and assay.

Storage

Storage:

Store at -80°C.

Storage buffer:

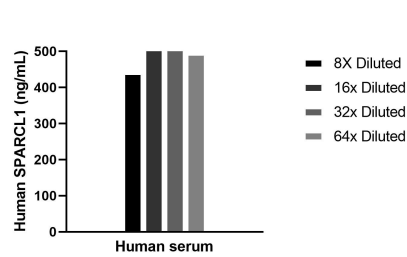
PBS only

For technical support and original validation data for this product please contact:

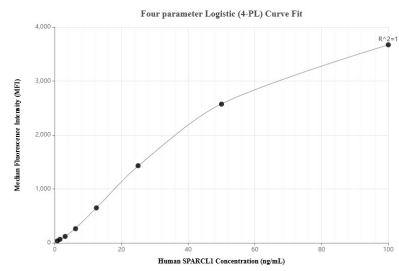
T: 1 (888) 4PTGLAB (1-888-478-4522) (toll free in USA), or 1(312) 455-8498 (outside USA)

E: proteintech@ptglab.com
W: ptglab.com**This product is exclusively available under Proteintech Group brand and is not available to purchase from any other manufacturer.**

Selected Validation Data



The mean SPARCL1 concentration was determined to be 508.2 ng/mL in Human serum.



Cytometric bead array standard curve of MP02200-2, SPARCL1 Recombinant Matched Antibody Pair, PBS Only. Capture antibody: 85906-3-PBS. Detection antibody: 85906-1-PBS. Standard: Eg2837. Range: 0.781-100 ng/mL