

DARPP32 Recombinant Matched Antibody Pair, PBS Only

Catalog Number: **MP02205-1**

Capture Antibody Information

Catalog Number:
85966-2-PBS
Host:
Rabbit
Isotype:
IgG
Purification Method:
Protein A purification

Clone ID:
250284D12
Reactivity:
human
Immunogen Catalog Number:
Ag1216

Conjugate:
Unconjugated
Full name:
protein phosphatase 1, regulatory (inhibitor) subunit 1B
Gene ID:
84152

Detection Antibody Information

Catalog Number:
85966-1-PBS
Host:
Rabbit
Isotype:
IgG
Purification Method:
Protein A purification

Clone ID:
250284B6
Reactivity:
human
GenBank:
BC001519
Immunogen Catalog Number:
Ag1216

Conjugate:
Unconjugated
Full name:
protein phosphatase 1, regulatory (inhibitor) subunit 1B
Gene ID:
84152

Applications

Tested Applications:
Cytometric bead array

Range:
0.156-20 ng/mL (Cytometric Bead Array)

Recommended Dilutions:
It is recommended that this reagent should be titrated in each testing system to obtain optimal results.

Product Information

MP02205-1 targets DARPP32 in immunoassays as a matched antibody pair. Validated in Cytometric bead array.

Capture antibody: DARPP32 Recombinant antibody, PBS Only (Capture) 85966-2-PBS (250284D12). 100 µg. Concentration 1 mg/mL.

Detection antibody: DARPP32 Recombinant antibody, PBS Only (Detector) 85966-1-PBS (250284B6). 100 µg. Concentration 1 mg/mL.

Unconjugated rabbit recombinant monoclonal antibody pair in PBS only storage buffer at a concentration of 1 mg/mL, ready for conjugation. Created using Proteintech's proprietary in-house recombinant technology. Recombinant production enables unrivalled batch-to-batch consistency, easy scale-up, and future security of supply.

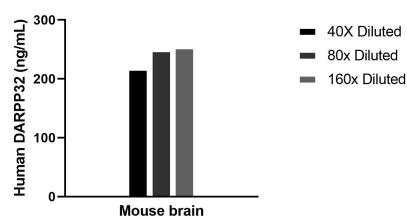
Matched antibody pairs are designed for use in a variety of assays and platforms that require matched antibody pairs.

Antibody use should be optimized for each application and assay.

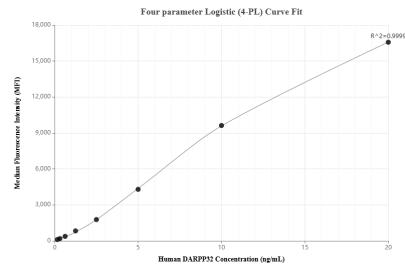
Storage

Storage:
Store at -80°C.
Storage buffer:
PBS only

Selected Validation Data



The mean DARPP32 concentration was determined to be 239.4 ng/mL in Mouse brain tissue extract based on a 6.6 mg/mL extract load.



Cytometric bead array standard curve of MP02205-1, DARPP32 Recombinant Matched Antibody Pair, PBS Only. Capture antibody: 85966-2-PBS. Detection antibody: 85966-1-PBS. Standard: Ag1216. Range: 0.156-20 ng/mL.