

Neutrophil Elastase Recombinant Matched Antibody Pair, PBS Only

Catalog Number: **MP02206-2**

Capture Antibody Information

Catalog Number:

85965-4-PBS

Host:

Rabbit

Isotype:

IgG

Purification Method:

Protein A purification

Clone ID:

250346E4

Reactivity:

human

Immunogen Catalog Number:

Eg3192

Conjugate:

Unconjugated

Full name:

elastase 2, neutrophil

Gene ID:

1991

Detection Antibody Information

Catalog Number:

85965-2-PBS

Host:

Rabbit

Isotype:

IgG

Purification Method:

Protein A purification

Clone ID:

250346D5

Reactivity:

human

GenBank:

NM_001972.4

Immunogen Catalog Number:

Eg3192

Conjugate:

Unconjugated

Full name:

elastase 2, neutrophil

Gene ID:

1991

Applications

Tested Applications:

Sandwich ELISA

Range:

78.1-5000 pg/mL (Sandwich ELISA)

Recommended Dilutions:

It is recommended that this reagent should be titrated in each testing system to obtain optimal results.

Product Information

MP02206-2 targets Neutrophil Elastase in immunoassays as a matched antibody pair. Validated in Sandwich ELISA.

Capture antibody: ELA2 Recombinant antibody, PBS Only (Capture) 85965-4-PBS (250346E4). 100 µg. Concentration 1 mg/mL.

Detection antibody: ELA2 Recombinant antibody, PBS Only (Capture/Detector) 85965-2-PBS (250346D5). 100 µg. Concentration 1 mg/mL.

Unconjugated rabbit recombinant monoclonal antibody pair in PBS only storage buffer at a concentration of 1 mg/mL, ready for conjugation. Created using Proteintech's proprietary in-house recombinant technology. Recombinant production enables unrivalled batch-to-batch consistency, easy scale-up, and future security of supply.

Matched antibody pairs are designed for use in a variety of assays and platforms that require matched antibody pairs.

Antibody use should be optimized for each application and assay.

Storage

Storage:

Store at -80°C.

Storage buffer:

PBS only

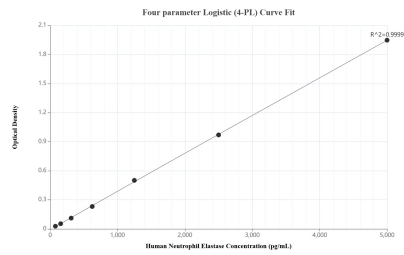
For technical support and original validation data for this product please contact:

T: 1 (888) 4PTGLAB (1-888-478-4522) (toll free
in USA), or 1(312) 455-8498 (outside USA)

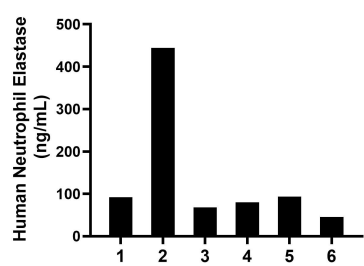
E: proteintech@ptglab.com
W: ptglab.com

This product is exclusively available under Proteintech Group brand and is not available to purchase from any other manufacturer.

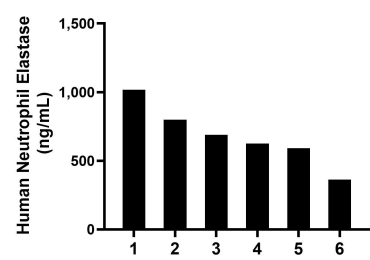
Selected Validation Data



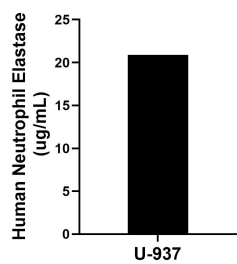
Sandwich ELISA standard curve of MP02206-2, Human Neutrophil Elastase Recombinant Matched Antibody Pair - PBS only. 85965-4-PBS was coated to a plate as the capture antibody and incubated with serial dilutions of standard Eg3192. 85965-2-PBS was HRP conjugated as the detection antibody. Range: 78.1-5000 pg/mL



Serum of six individual healthy human donors was measured. The Neutrophil Elastase concentration of detected samples was determined to be 137.2 ng/mL with a range of 45.9-444.0 ng/mL



Saliva of six individual healthy human donors was measured. The Neutrophil Elastase concentration of detected samples was determined to be 681.2 ng/mL with a range of 363.2-1,018.3 ng/mL



The mean Neutrophil Elastase concentration was determined to be 20.9 ug/mL in U-937 cell extract based on a 2.6 mg/mL extract load.