

CD58 Recombinant Matched Antibody Pair, PBS Only

Catalog Number: **MP02208-2**

Capture Antibody Information

Catalog Number:
85950-3-PBS
Host:
Rabbit
Isotype:
IgG
Purification Method:
Protein A purification

Clone ID:
250250D9
Reactivity:
human
Immunogen Catalog Number:
Eg4236

Conjugate:
Unconjugated
Full name:
CD58 molecule
Gene ID:
965

Detection Antibody Information

Catalog Number:
85950-2-PBS
Host:
Rabbit
Isotype:
IgG
Purification Method:
Protein A purification

Clone ID:
250250A8
Reactivity:
human
GenBank:
BC005930
Immunogen Catalog Number:
Eg4236

Conjugate:
Unconjugated
Full name:
CD58 molecule
Gene ID:
965

Applications

Tested Applications:
Sandwich ELISA

Range:
46.9-3000 pg/mL (Sandwich ELISA)

Recommended Dilutions:
It is recommended that this reagent should be titrated in each testing system to obtain optimal results.

Product Information

MP02208-2 targets CD58 in immunoassays as a matched antibody pair. Validated in Sandwich ELISA.

Capture antibody: CD58 Recombinant antibody, PBS Only (Capture) 85950-3-PBS (250250D9). 100 µg. Concentration 1 mg/mL.

Detection antibody: CD58 Recombinant antibody, PBS Only (Detector) 85950-2-PBS (250250A8). 100 µg. Concentration 1 mg/mL.

Unconjugated rabbit recombinant monoclonal antibody pair in PBS only storage buffer at a concentration of 1 mg/mL, ready for conjugation. Created using Proteintech's proprietary in-house recombinant technology. Recombinant production enables unrivalled batch-to-batch consistency, easy scale-up, and future security of supply.

Matched antibody pairs are designed for use in a variety of assays and platforms that require matched antibody pairs.

Antibody use should be optimized for each application and assay.

Storage

Storage:
Store at -80°C.
Storage buffer:
PBS only

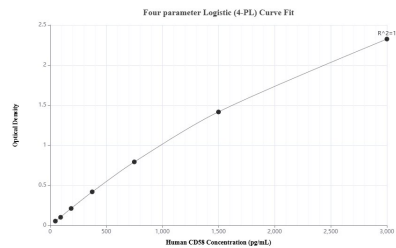
For technical support and original validation data for this product please contact:

T: 1 (888) 4PTGLAB (1-888-478-4522) (toll free in USA), or 1(312) 455-8498 (outside USA)

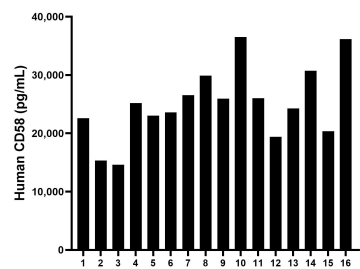
E: proteintech@ptglab.com
W: ptglab.com

This product is exclusively available under Proteintech Group brand and is not available to purchase from any other manufacturer.

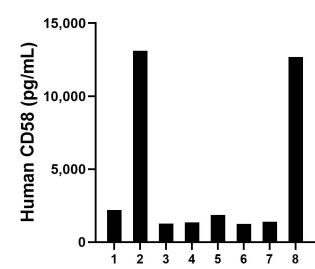
Selected Validation Data



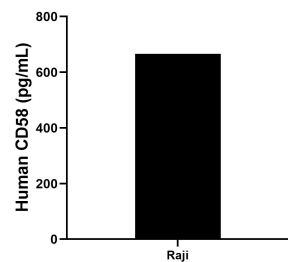
Sandwich ELISA standard curve of MP02208-2, Human CD58 Recombinant Matched Antibody Pair - PBS only. 85950-3-PBS was coated to a plate as the capture antibody and incubated with serial dilutions of standard Eg4236. 85950-2-PBS was HRP conjugated as the detection antibody. Range: 46.9-3000 pg/mL



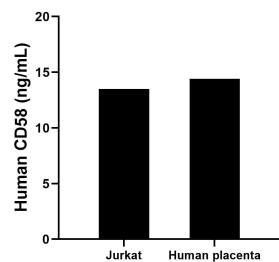
Serum of sixteen individual healthy human donors was measured. The human CD58 concentration of detected samples was determined to be 25,010.4 pg/mL with a range of 14,622.8 - 36,503.5 pg/mL



Urine of eight individual healthy human donors was measured. The human CD58 concentration of detected samples was determined to be 4,388.9 pg/mL with a range of 1,243.7 - 13,113.2 pg/mL



Raji human Burkitt's lymphoma cells (5×10^6 cells/mL) were cultured in RPMI supplemented with 10% fetal bovine serum, 2 mM L-glutamine, 100 U/mL penicillin, and 100 µg/mL streptomycin sulfate. An aliquot of the cell culture supernate was removed, assayed for human CD58, and measured 666.0 pg/mL



The mean CD58 concentration was determined to be 13.50 ng/mL in Jurkat cell extract based on a 2.2 mg/mL extract load and 14.40 ng/mL in human placenta tissue extract based on a 1.7 mg/mL extract load.