

For Research Use Only



Carbonic Anhydrase 6/CA6 Recombinant Matched Antibody Pair, PBS Only

Catalog Number: **MP02211-2**

Capture Antibody Information

Catalog Number:

85940-1-PBS

Host:

Rabbit

Isotype:

IgG

Purification Method:

Protein A purification

Clone ID:

250412G3

Reactivity:

human

Immunogen Catalog Number:

Eg2963

Conjugate:

Unconjugated

Full name:

carbonic anhydrase VI

Gene ID:

765

Detection Antibody Information

Catalog Number:

85940-2-PBS

Host:

Rabbit

Isotype:

IgG

Purification Method:

Protein A purification

Clone ID:

250412E5

Reactivity:

human

GenBank:

NM_001215.3

Immunogen Catalog Number:

Eg2963

Conjugate:

Unconjugated

Full name:

carbonic anhydrase VI

Gene ID:

765

Applications

Tested Applications:

Sandwich ELISA

Range:

31.3-2000 pg/mL (Sandwich ELISA)

Recommended Dilutions:

It is recommended that this reagent should be titrated in each testing system to obtain optimal results.

Product Information

MP02211-2 targets Carbonic Anhydrase 6/CA6 in immunoassays as a matched antibody pair. Validated in Sandwich ELISA.

Capture antibody: CA6 Recombinant antibody, PBS Only (Capture/Detector) 85940-1-PBS (250412G3). 100 µg. Concentration 1 mg/mL.

Detection antibody: CA6 Recombinant antibody, PBS Only (Capture/Detector) 85940-2-PBS (250412E5). 100 µg. Concentration 1 mg/mL.

Unconjugated rabbit recombinant monoclonal antibody pair in PBS only storage buffer at a concentration of 1 mg/mL, ready for conjugation. Created using Proteintech's proprietary in-house recombinant technology. Recombinant production enables unrivalled batch-to-batch consistency, easy scale-up, and future security of supply.

Matched antibody pairs are designed for use in a variety of assays and platforms that require matched antibody pairs.

Antibody use should be optimized for each application and assay.

Storage

Storage:

Store at -80°C.

Storage buffer:

PBS only

For technical support and original validation data for this product please contact:

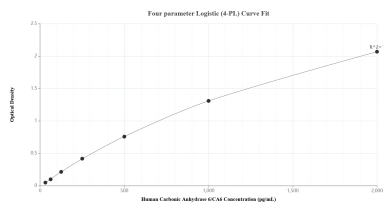
T: 1 (888) 4PTGLAB (1-888-478-4522) (toll free in USA), or 1(312) 455-8498 (outside USA)

E: proteintech@ptglab.com

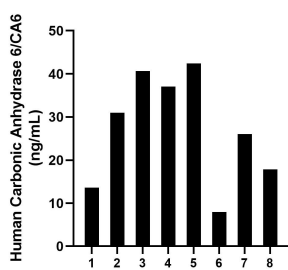
W: ptglab.com

This product is exclusively available under Proteintech Group brand and is not available to purchase from any other manufacturer.

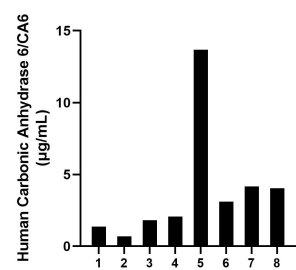
Selected Validation Data



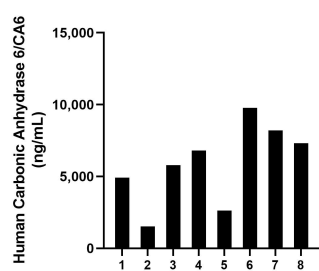
Sandwich ELISA standard curve of MP02211-2, Human Carbonic Anhydrase 6/CA6 Recombinant Matched Antibody Pair - PBS only. 85940-1-PBS was coated to a plate as the capture antibody and incubated with serial dilutions of standard Eg2963. 85940-2-PBS was HRP conjugated as the detection antibody. Range: 31.3-2000 pg/mL



Serum of eight individual healthy human donors was measured. The Carbonic Anhydrase 6/CA6 concentration of detected samples was determined to be 27.1 ng/mL with a range of 8.0-42.4 ng/mL.



Human milk of eight individual healthy human donors was measured. The Carbonic Anhydrase 6/CA6 concentration of detected samples was determined to be 3.9 µg/mL with a range of 0.7-13.7 µg/mL.



Saliva of eight individual healthy human donors was measured. The Carbonic Anhydrase 6/CA6 concentration of detected samples was determined to be 5,869.5 ng/mL with a range of 1,531.8-9,760.2 ng/mL.