

Cyclophilin E Recombinant Matched Antibody Pair, PBS Only

Catalog Number: **MP02219-1**

Capture Antibody Information

Catalog Number:
85952-3-PBS
Host:
Rabbit
Isotype:
IgG
Purification Method:
Protein A purification

Clone ID:
250296B6
Reactivity:
human
Immunogen Catalog Number:
Ag7603

Conjugate:
Unconjugated
Full name:
peptidylprolyl isomerase E (cyclophilin E)
Gene ID:
10450

Detection Antibody Information

Catalog Number:
85952-2-PBS
Host:
Rabbit
Isotype:
IgG
Purification Method:
Protein A purification

Clone ID:
250296E4
Reactivity:
human
GenBank:
BC004898
Immunogen Catalog Number:
Ag7603

Conjugate:
Unconjugated
Full name:
peptidylprolyl isomerase E (cyclophilin E)
Gene ID:
10450

Applications

Tested Applications:
Sandwich ELISA

Range:
46.9-3000 pg/mL (Sandwich ELISA)

Recommended Dilutions:
It is recommended that this reagent should be titrated in each testing system to obtain optimal results.

Product Information

MP02219-1 targets Cyclophilin E in immunoassays as a matched antibody pair. Validated in Sandwich ELISA.

Capture antibody: PPIE Recombinant antibody, PBS Only (Capture) 85952-3-PBS (250296B6). 100 µg. Concentration 1 mg/mL.

Detection antibody: PPIE Recombinant antibody, PBS Only (Detector) 85952-2-PBS (250296E4). 100 µg. Concentration 1 mg/mL.

Unconjugated rabbit recombinant monoclonal antibody pair in PBS only storage buffer at a concentration of 1 mg/mL, ready for conjugation. Created using Proteintech's proprietary in-house recombinant technology. Recombinant production enables unrivalled batch-to-batch consistency, easy scale-up, and future security of supply.

Matched antibody pairs are designed for use in a variety of assays and platforms that require matched antibody pairs.

Antibody use should be optimized for each application and assay.

Storage

Storage:
Store at -80°C.
Storage buffer:
PBS only

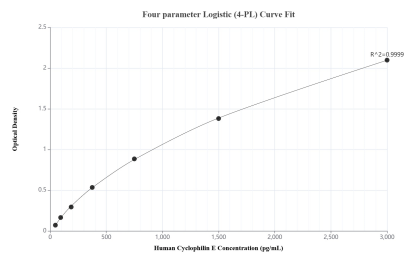
For technical support and original validation data for this product please contact:

T: 1 (888) 4PTGLAB (1-888-478-4522) (toll free in USA), or 1(312) 455-8498 (outside USA)

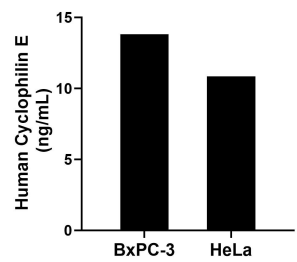
E: proteintech@ptglab.com
W: ptglab.com

This product is exclusively available under Proteintech Group brand and is not available to purchase from any other manufacturer.

Selected Validation Data



Sandwich ELISA standard curve of MP02219-1, Human Cyclophilin E Recombinant Matched Antibody Pair - PBS only. 85952-3-PBS was coated to a plate as the capture antibody and incubated with serial dilutions of standard Ag7603. 85952-2-PBS was HRP conjugated as the detection antibody. Range: 46.9-3000 pg/mL



The mean Cyclophilin E concentration was determined to be 13.81 ng/mL in BxPC-3 cell extract based on a 2.00 mg/mL extract load and 10.85 ng/mL in HeLa cell extract based on a 1.30 mg/mL extract load.