

For Research Use Only



# SMARCC1 Recombinant Matched Antibody Pair, PBS Only

Catalog Number:MP02222-2

## Capture Antibody Information

Catalog Number:  
86015-3-PBS  
Host:  
Rabbit  
Isotype:  
IgG  
Purification Method:  
Protein A purification

Clone ID:  
250455D11  
Reactivity:  
human  
Immunogen Catalog Number:  
Ag12109

Conjugate:  
Unconjugated  
Full name:  
SWI/SNF related, matrix associated, actin dependent regulator of chromatin, subfamily c, member 1  
Gene ID:  
6599

## Detection Antibody Information

Catalog Number:  
86015-2-PBS  
Host:  
Rabbit  
Isotype:  
IgG  
Purification Method:  
Protein A purification

Clone ID:  
250455C8  
Reactivity:  
human  
GenBank:  
BC050564  
Immunogen Catalog Number:  
Ag12109

Conjugate:  
Unconjugated  
Full name:  
SWI/SNF related, matrix associated, actin dependent regulator of chromatin, subfamily c, member 1  
Gene ID:  
6599

## Applications

Tested Applications:  
Sandwich ELISA

Range:  
0.156-10 ng/mL (Sandwich ELISA)

Recommended Dilutions:  
It is recommended that this reagent should be titrated in each testing system to obtain optimal results.

## Product Information

MP02222-2 targets SMARCC1 in immunoassays as a matched antibody pair. Validated in Sandwich ELISA.

Capture antibody: SMARCC1 Recombinant antibody, PBS Only (Capture) 86015-3-PBS (250455D11). 100 µg. Concentration 1 mg/mL.

Detection antibody: SMARCC1 Recombinant antibody, PBS Only (Detector) 86015-2-PBS (250455C8). 100 µg. Concentration 1 mg/mL.

Unconjugated rabbit recombinant monoclonal antibody pair in PBS only storage buffer at a concentration of 1 mg/mL, ready for conjugation. Created using Proteintech's proprietary in-house recombinant technology. Recombinant production enables unrivalled batch-to-batch consistency, easy scale-up, and future security of supply.

Matched antibody pairs are designed for use in a variety of assays and platforms that require matched antibody pairs.

Antibody use should be optimized for each application and assay.

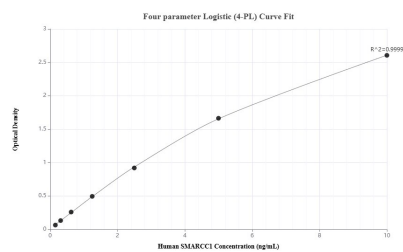
## Storage

Storage:  
Store at -80°C.  
Storage buffer:  
PBS only

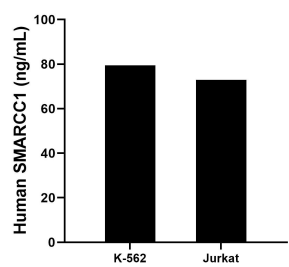
For technical support and original validation data for this product please contact:  
T: 1 (888) 4PTGLAB (1-888-478-4522) (toll free in USA), or 1(312) 455-8498 (outside USA)  
E: [proteintech@ptglab.com](mailto:proteintech@ptglab.com)  
W: [ptglab.com](http://ptglab.com)

This product is exclusively available under Proteintech Group brand and is not available to purchase from any other manufacturer.

## Selected Validation Data



Sandwich ELISA standard curve of MP02222-2, Human SMARCC1 Recombinant Matched Antibody Pair - PBS only. 86015-3-PBS was coated to a plate as the capture antibody and incubated with serial dilutions of standard Ag12109. 86015-2-PBS was HRP conjugated as the detection antibody. Range: 0.156-10 ng/mL



The mean SMARCC1 concentration was determined to be 79.50 ng/mL in K-562 cell extract based on a 3.0 mg/mL extract load and 72.90 ng/mL in Jurkat cell extract based on a 2.2 mg/mL extract load.