

For Research Use Only

Rat CTGF Recombinant Matched Antibody Pair, PBS Only



Catalog Number:MP02226-2

Capture Antibody Information

Catalog Number:
86012-4-PBS

Host:
Rabbit

Isotype:
IgG

Purification Method:
Protein A purification

Clone ID:
250663B3

Reactivity:
rat

Immunogen Catalog Number:
Eg3239

Conjugate:
Unconjugated

Full name:
connective tissue growth factor

Gene ID:
64032

Detection Antibody Information

Catalog Number:
86012-1-PBS

Host:
Rabbit

Isotype:
IgG

Purification Method:
Protein A purification

Clone ID:
250663A4

Reactivity:
rat

GenBank:
NM_022266.2

Immunogen Catalog Number:
Eg3239

Conjugate:
Unconjugated

Full name:
connective tissue growth factor

Gene ID:
64032

Applications

Tested Applications:
Sandwich ELISA

Range:
78.1-5000 pg/mL (Sandwich ELISA)

Recommended Dilutions:
It is recommended that this reagent should be titrated in each testing system to obtain optimal results.

Product Information

MP02226-2 targets CTGF in immunoassays as a matched antibody pair. Validated in Sandwich ELISA.

Capture antibody: Rat CTGF Recombinant antibody, PBS Only (Capture) 86012-4-PBS (250663B3). 100 µg. Concentration 1 mg/mL.

Detection antibody: Rat CTGF Recombinant antibody, PBS Only (Detector) 86012-1-PBS (250663A4). 100 µg. Concentration 1 mg/mL.

Unconjugated rabbit recombinant monoclonal antibody pair in PBS only storage buffer at a concentration of 1 mg/mL, ready for conjugation. Created using Proteintech's proprietary in-house recombinant technology. Recombinant production enables unrivalled batch-to-batch consistency, easy scale-up, and future security of supply.

Matched antibody pairs are designed for use in a variety of assays and platforms that require matched antibody pairs.

Antibody use should be optimized for each application and assay.

Storage

Storage:
Store at -80°C.
Storage buffer:
PBS only

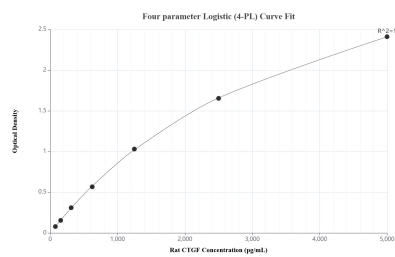
For technical support and original validation data for this product please contact:

T: 1 (888) 4PTGLAB (1-888-478-4522) (toll free in USA), or 1(312) 455-8498 (outside USA)

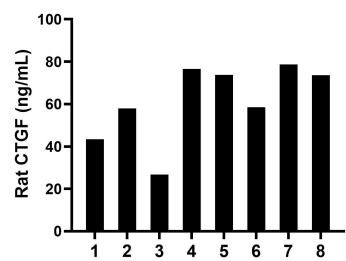
E: proteintech@ptglab.com
W: ptglab.com

This product is exclusively available under Proteintech Group brand and is not available to purchase from any other manufacturer.

Selected Validation Data



Sandwich ELISA standard curve of MP02226-2, Rat CTGF Recombinant Matched Antibody Pair - PBS only. 86012-4-PBS was coated to a plate as the capture antibody and incubated with serial dilutions of standard Eg3239. 86012-1-PBS was HRP conjugated as the detection antibody. Range: 78.1-5000 pg/mL



Serum of eight rats was measured. The CTGF concentration of detected samples was determined to be 61.2 ng/mL with a range of 26.8-78.7 ng/mL