

For Research Use Only



RBM7 Recombinant Matched Antibody Pair, PBS Only

Catalog Number:MP02227-2

Capture Antibody Information

Catalog Number:
85991-5-PBS

Host:
Rabbit

Isotype:
IgG

Purification Method:
Protein A purification

Clone ID:
250586E11

Reactivity:
human

Immunogen Catalog Number:
Ag11106

Conjugate:
Unconjugated

Full name:
RNA binding motif protein 7

Gene ID:
10179

Detection Antibody Information

Catalog Number:
85991-1-PBS

Host:
Rabbit

Isotype:
IgG

Purification Method:
Protein A purification

Clone ID:
250586B1

Reactivity:
human

GenBank:
BC034381

Immunogen Catalog Number:
Ag11106

Conjugate:
Unconjugated

Full name:
RNA binding motif protein 7

Gene ID:
10179

Applications

Tested Applications:
Sandwich ELISA

Range:
78.1-5000 pg/mL (Sandwich ELISA)

Recommended Dilutions:
It is recommended that this reagent should be titrated in each testing system to obtain optimal results.

Product Information

MP02227-2 targets RBM7 in immunoassays as a matched antibody pair. Validated in Sandwich ELISA.

Capture antibody: RBM7 Recombinant antibody, PBS Only (Capture) 85991-5-PBS (250586E11). 100 µg. Concentration 1 mg/mL.

Detection antibody: RBM7 Recombinant antibody, PBS Only (Detector) 85991-1-PBS (250586B1). 100 µg. Concentration 1 mg/mL.

Unconjugated rabbit recombinant monoclonal antibody pair in PBS only storage buffer at a concentration of 1 mg/mL, ready for conjugation. Created using Proteintech's proprietary in-house recombinant technology. Recombinant production enables unrivalled batch-to-batch consistency, easy scale-up, and future security of supply.

Matched antibody pairs are designed for use in a variety of assays and platforms that require matched antibody pairs.

Antibody use should be optimized for each application and assay.

Storage

Storage:
Store at -80°C.
Storage buffer:
PBS only

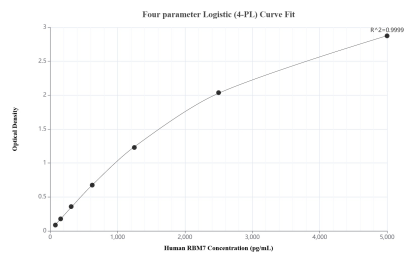
For technical support and original validation data for this product please contact:

T: 1 (888) 4PTGLAB (1-888-478-4522) (toll free in USA), or 1(312) 455-8498 (outside USA)

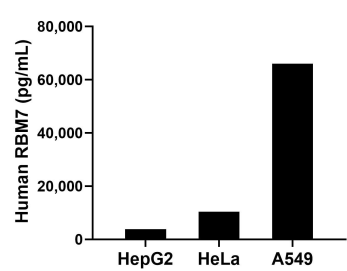
E: proteintech@ptglab.com
W: ptglab.com

This product is exclusively available under Proteintech Group brand and is not available to purchase from any other manufacturer.

Selected Validation Data



Sandwich ELISA standard curve of MP02227-2, Human RBM7 Recombinant Matched Antibody Pair - PBS only. 85991-5-PBS was coated to a plate as the capture antibody and incubated with serial dilutions of standard Ag11106. 85991-1-PBS was HRP conjugated as the detection antibody. Range: 78.1-5000 pg/mL.



The mean RBM7 concentration was determined to be 3,857.0 pg/mL in HepG2 cell extract based on a 1.8 mg/mL extract load, 10,443.6 pg/mL in HeLa cell extract based on a 1.3 mg/mL extract load and 65,958.2 pg/mL in A549 cell extract based on a 3.1 mg/mL extract load.