

For Research Use Only



Properdin/PFC Recombinant Matched Antibody Pair, PBS Only

Catalog Number:MP02228-2

Capture Antibody Information

Catalog Number:
85999-5-PBS

Host:
Rabbit

Isotype:
IgG

Purification Method:
Protein A purification

Clone ID:
250654F8

Reactivity:
human

Immunogen Catalog Number:
Eg2219

Conjugate:
Unconjugated

Full name:
complement factor properdin

Gene ID:
5199

Detection Antibody Information

Catalog Number:
85999-4-PBS

Host:
Rabbit

Isotype:
IgG

Purification Method:
Protein A purification

Clone ID:
250654D5

Reactivity:
human

GenBank:
BC015756

Immunogen Catalog Number:
Eg2219

Conjugate:
Unconjugated

Full name:
complement factor properdin

Gene ID:
5199

Applications

Tested Applications:
Sandwich ELISA

Range:
62.5-4000 pg/mL (Sandwich ELISA)

Recommended Dilutions:
It is recommended that this reagent should be titrated in each testing system to obtain optimal results.

Product Information

MP02228-2 targets Properdin/PFC in immunoassays as a matched antibody pair. Validated in Sandwich ELISA.

Capture antibody: CFP Recombinant antibody, PBS Only (Capture) 85999-5-PBS (250654F8). 100 µg. Concentration 1 mg/mL.

Detection antibody: CFP Recombinant antibody, PBS Only (Detector) 85999-4-PBS (250654D5). 100 µg. Concentration 1 mg/mL.

Unconjugated rabbit recombinant monoclonal antibody pair in PBS only storage buffer at a concentration of 1 mg/mL, ready for conjugation. Created using Proteintech's proprietary in-house recombinant technology. Recombinant production enables unrivalled batch-to-batch consistency, easy scale-up, and future security of supply.

Matched antibody pairs are designed for use in a variety of assays and platforms that require matched antibody pairs.

Antibody use should be optimized for each application and assay.

Storage

Storage:
Store at -80°C.
Storage buffer:
PBS only

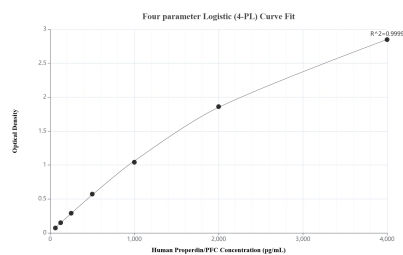
For technical support and original validation data for this product please contact:

T: 1 (888) 4PTGLAB (1-888-478-4522) (toll free in USA), or 1(312) 455-8498 (outside USA)

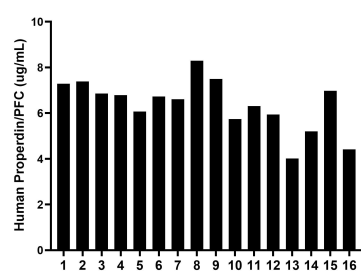
E: proteintech@ptglab.com
W: ptglab.com

This product is exclusively available under Proteintech Group brand and is not available to purchase from any other manufacturer.

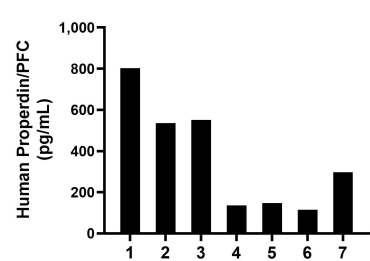
Selected Validation Data



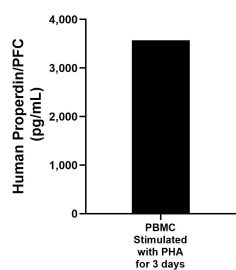
Sandwich ELISA standard curve of MP02228-2, Human Properdin/PFC Recombinant Matched Antibody Pair - PBS only. 85999-5-PBS was coated to a plate as the capture antibody and incubated with serial dilutions of standard Eg2219. 85999-4-PBS was HRP conjugated as the detection antibody. Range: 62.5-4000 pg/mL



Serum of sixteen individual healthy human donors was measured. The Properdin/PFC concentration of detected samples was determined to be 6.4 ug/mL with a range of 4.0-8.3 ug/mL.



Urine of seven individual healthy human donors was measured. The Properdin/PFC concentration of detected samples was determined to be 369.6 pg/mL with a range of 115.7-802.5 pg/mL



Human peripheral blood mononuclear cells (PBMC) were cultured stimulated with 10 µg/mL PHA for 3 days. The mean Properdin/PFC concentration was determined to be 3,569.6 pg/mL in PHA stimulated PBMC supernatant.