

CD85j / LILRB1 Recombinant Matched Antibody Pair, PBS Only

Catalog Number: **MP02236-2**

Capture Antibody Information

Catalog Number:
85975-5-PBS
Host:
Rabbit
Isotype:
IgG
Purification Method:
Protein A purification

Clone ID:
250502H2
Reactivity:
human
Immunogen Catalog Number:
Eg3701

Conjugate:
Unconjugated
Full name:
Leukocyte immunoglobulin-like
receptor, subfamily B (with TM and
ITIM domains), member 1
Gene ID:
10859

Detection Antibody Information

Catalog Number:
85975-4-PBS
Host:
Rabbit
Isotype:
IgG
Purification Method:
Protein A purification

Clone ID:
250502B1
Reactivity:
human
GenBank:
BC015731
Immunogen Catalog Number:
Eg3701

Conjugate:
Unconjugated
Full name:
Leukocyte immunoglobulin-like
receptor, subfamily B (with TM and
ITIM domains), member 1
Gene ID:
10859

Applications

Tested Applications:
Sandwich ELISA

Range:
31.3-2000 pg/mL (Sandwich ELISA)

Recommended Dilutions:
It is recommended that this reagent
should be titrated in each testing
system to obtain optimal results.

Product Information

MP02236-2 targets CD85j / LILRB1 in immunoassays as a matched antibody pair. Validated in Sandwich ELISA.

Capture antibody: CD85j / LILRB1 Recombinant antibody, PBS Only (Capture) 85975-5-PBS (250502H2). 100 µg.
Concentration 1 mg/mL.

Detection antibody: CD85j / LILRB1 Recombinant antibody, PBS Only (Detector) 85975-4-PBS (250502B1). 100 µg.
Concentration 1 mg/mL.

Unconjugated rabbit recombinant monoclonal antibody pair in PBS only storage buffer at a concentration of 1 mg/mL, ready for conjugation. Created using Proteintech's proprietary in-house recombinant technology. Recombinant production enables unrivalled batch-to-batch consistency, easy scale-up, and future security of supply.

Matched antibody pairs are designed for use in a variety of assays and platforms that require matched antibody pairs.

Antibody use should be optimized for each application and assay.

Storage

Storage:
Store at -80°C.
Storage buffer:
PBS only

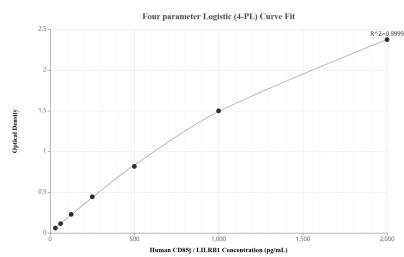
For technical support and original validation data for this product please contact:

T: 1 (888) 4PTGLAB (1-888-478-4522) (toll free
in USA), or 1(312) 455-8498 (outside USA)

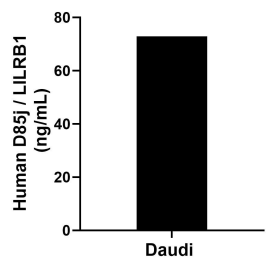
E: proteintech@ptglab.com
W: ptglab.com

**This product is exclusively available under Proteintech
Group brand and is not available to purchase from any
other manufacturer.**

Selected Validation Data



Sandwich ELISA standard curve of MP02236-2, Human CD85j / LILRB1 Recombinant Matched Antibody Pair - PBS only. 85975-5-PBS was coated to a plate as the capture antibody and incubated with serial dilutions of standard Eg3701. 85975-4-PBS was HRP conjugated as the detection antibody. Range: 31.3-2000 pg/mL



The mean CD85j / LILRB1 concentration was determined to be 72.9 ng/mL in Daudi cell extract based on a 1.8 mg/mL extract load.